

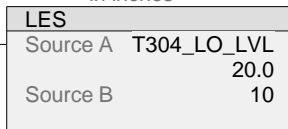
Copyright (c) 2011-2023 Dogwood Valley Press, LLC

\*\*\*\*\* Day Tank Level Control With Alarms \*\*\*\*\*

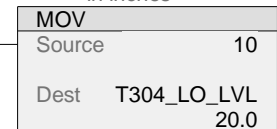
This section from SP7-2

Make sure minimum and maximum tank levels within bounds.

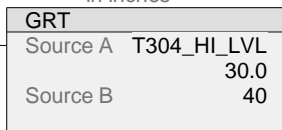
Minimum tank level  
in inches



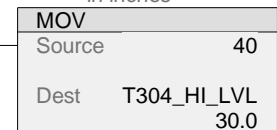
Minimum tank level  
in inches



Maximum tank level  
in inches

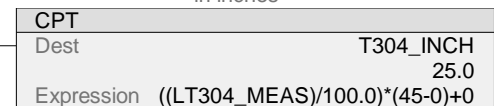


Maximum tank level  
in inches



Convert level measurement to level in inches.

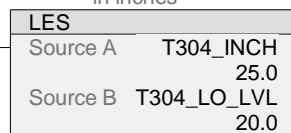
Current tank level  
in inches



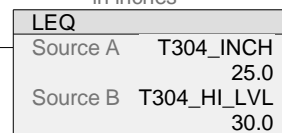
Tank Control - on when level low, off when level high.

Enable day tank  
control, on allows  
day tank to operate.  
When off, valve is  
closed and pump off.  
T304\_ENABLE

Current tank level  
in inches



Current tank level  
in inches



P-303 pump control,  
on runs pump  
P303\_RUN  
<Local:2:O.Data.0>

P-303 pump control,  
on runs pump  
P303\_RUN  
<Local:2:O.Data.0>

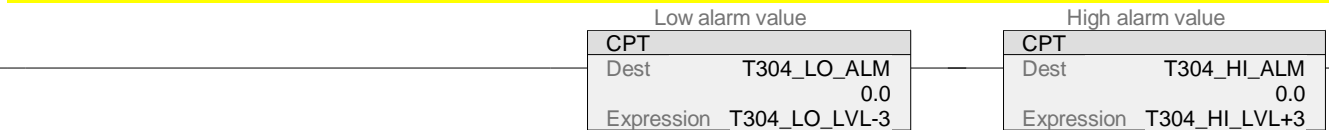
XV303 valve control,  
on opens valve, off  
closes valve  
XV303\_SOL  
<Local:2:O.Data.1>

\*\*\*\*\* Section for SP7-3 \*\*\*\*\*

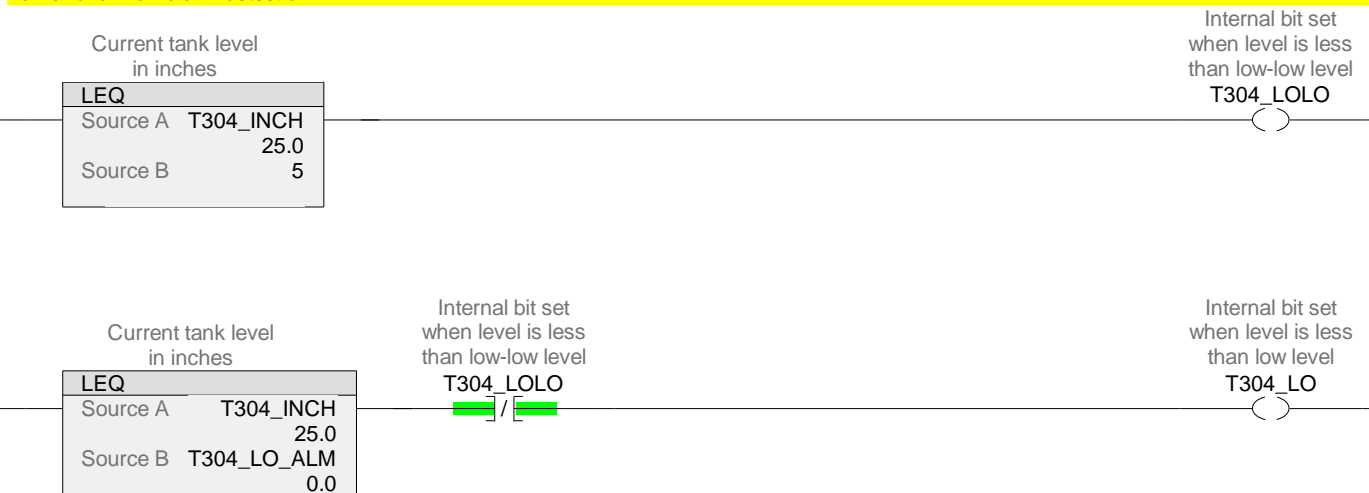
Additional internal memory:

Symbol	Data Type	
T304_LO_ALM	REAL	Low alarm value
T304_HI_ALM	REAL	High alarm value
T304_LOLO	BOOL	On when low-low alarm
T304_LO	BOOL	On when low alarm
T304_HIHI	BOOL	On when high-high alarm
T304_HI	BOOL	On when high-high alarm
ONS1	BOOL	One-shot bit for low-low trigger for horn
ONS2	BOOL	One-shot bit for high-high trigger for horn
LOLO_TMR1	TIMER	First timer for flashing lamp
LOLO_TMR2	TIMER	Second timer for flashing lamp
HIHI_TMR1	TIMER	First timer for flashing lamp
HIHI_TMR2	TIMER	Second timer for flashing lamp

Calculate alarm level values.



Low and low-low alarm detection



Low and low-low indication. Flashing light for low-low.

