

Erbia Can Tipper/Rotator Control - With Simulation

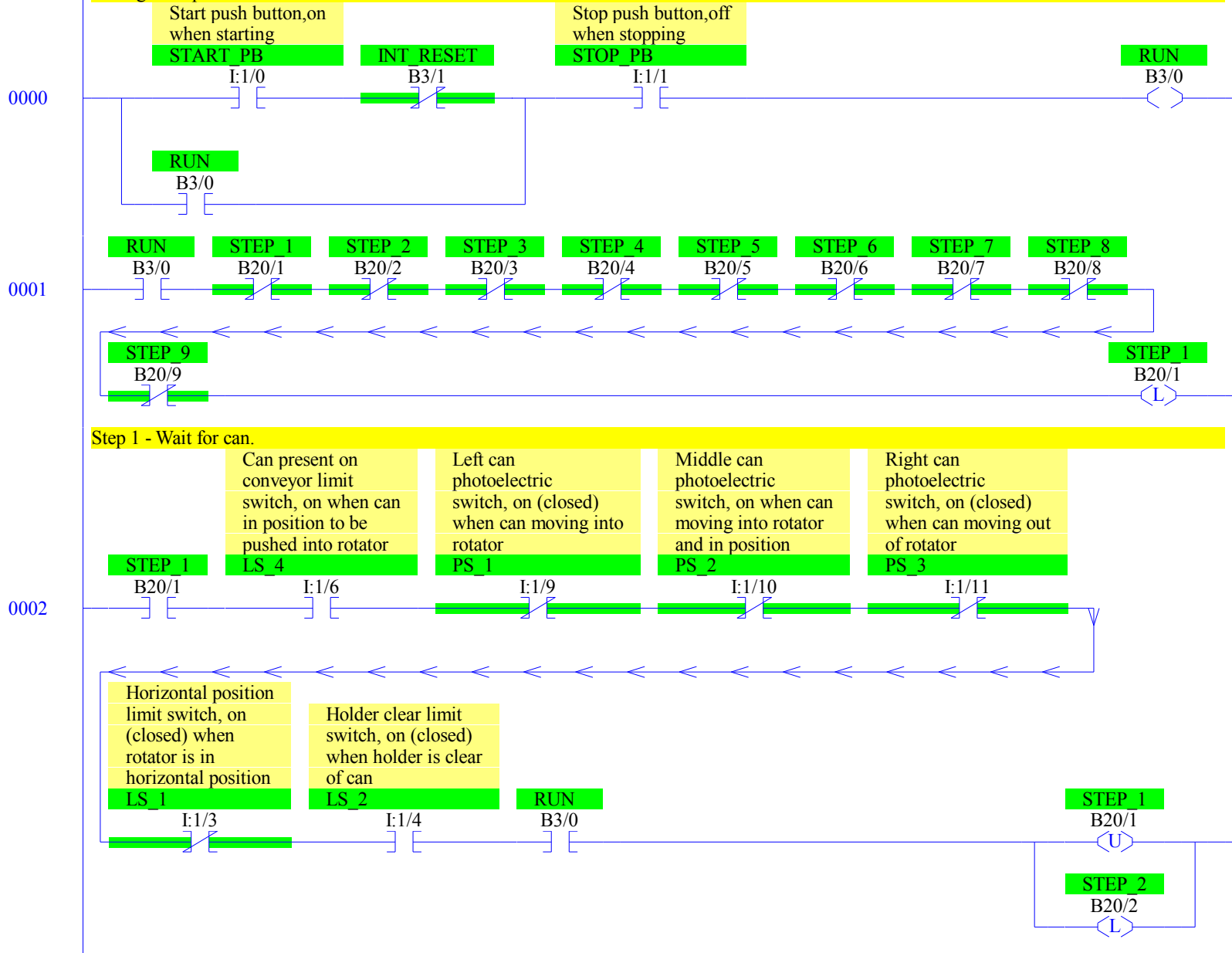
Copyright (c) 2013, 2015 Dogwood Valley Press, LLC

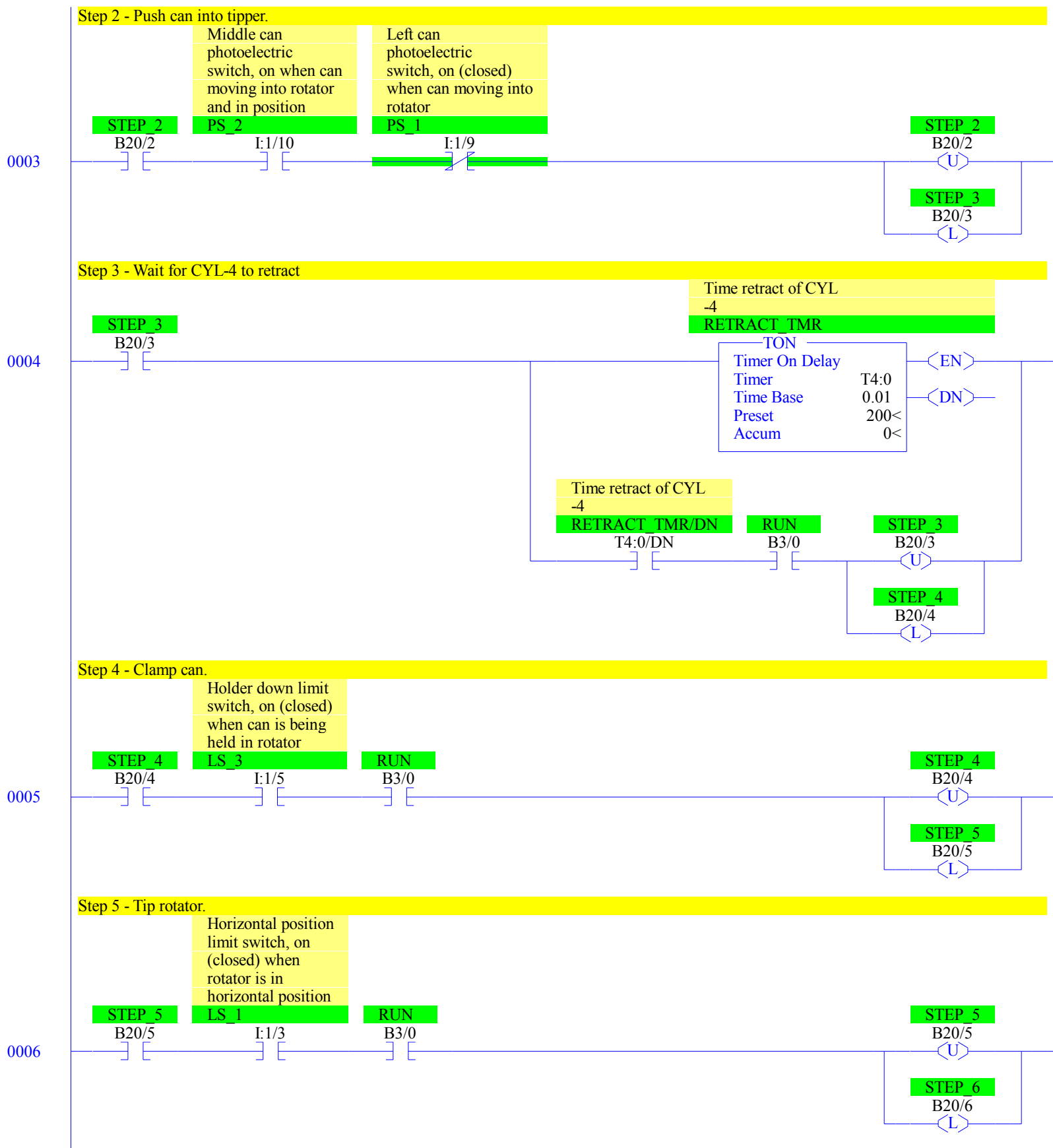
Additional internal memory:

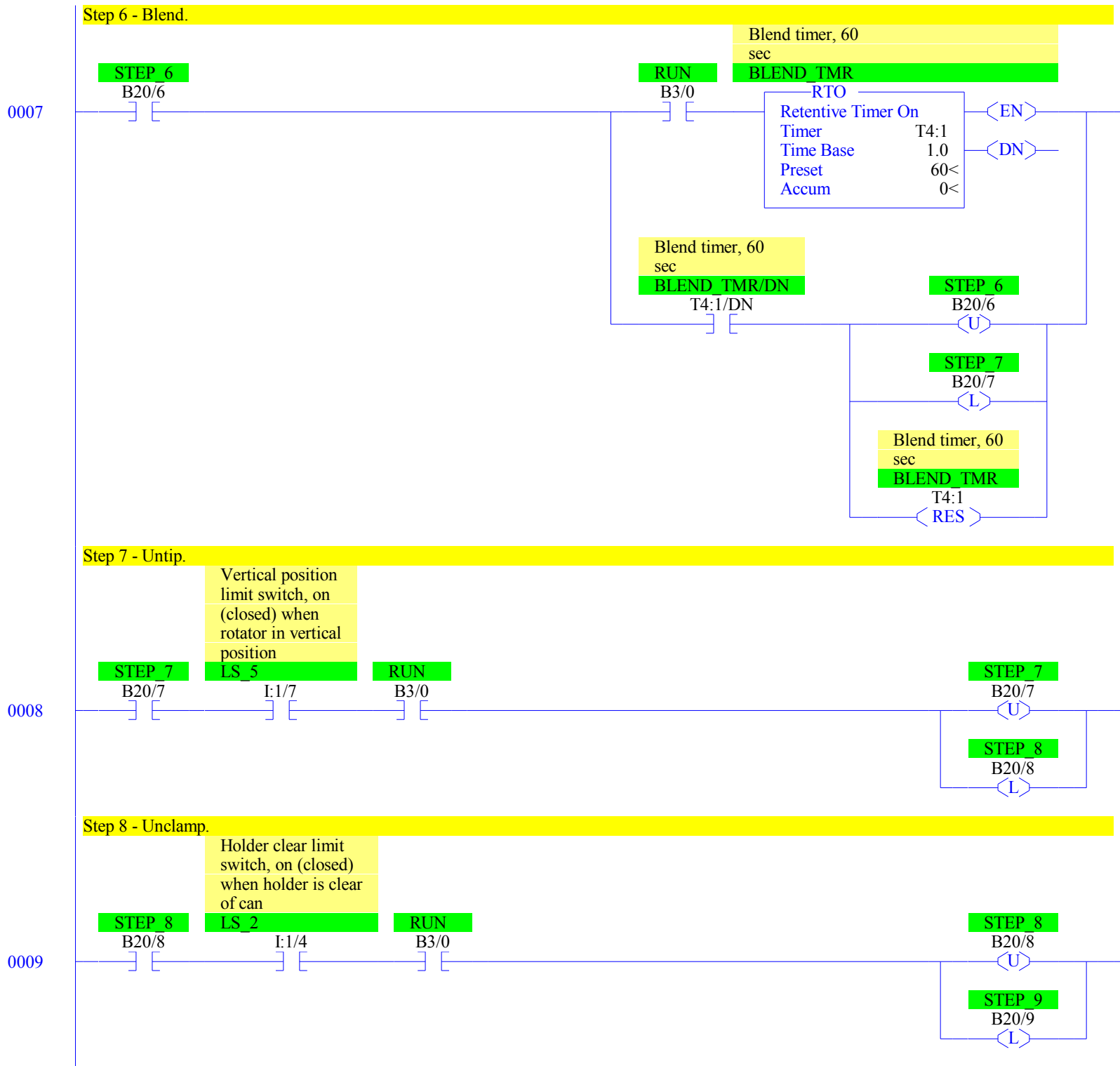
Symbol	Address	
RUN	B3/0	On while station running
INT_RESET	B3/1	Internal reset
STEP_1 to STEP_9	B20/1 to B20/9	Step-in-progress bits
RETRACT_TMR	T4:0	Times retract of CYL-4
BLEND_TMR	T4:1	Times rotation for blend

Start/stop and initial start.

During reset prevent start.







0010

Step 9 - Push Out.

CYL_4 fully extended
limit switch, on
when cylinder is
fully extended,
pushing can out

STEP 9**LS_6**

B20/9

I:1/8

STEP 9

B20/9

(U)

STEP 1

B20/1

(L)

0011

Reset

Reset push button,
on when restoring
station to initial
state

RESET_PB

I:1/2

RUN

B3/0

INT RESET

B3/1

()

INT RESET

B3/1

Vertical position
limit switch, on
(closed) when
rotator in vertical
position

LS_5

I:1/7

Holder clear limit
switch, on (closed)
when holder is clear
of can

LS_2

I:1/4

CYL_4 fully extended
limit switch, on
when cylinder is
fully extended,
pushing can out

LS_6

I:1/8

STEP 1

B20/1

(U)

STEP 2

B20/2

(U)

STEP 3

B20/3

(U)

STEP 4

B20/4

(U)

STEP 5

B20/5

(U)

STEP 6

B20/6

(U)

STEP 7

B20/7

(U)

STEP 8

B20/8

(U)

Blend timer, 60
sec

BLEND_TMR

T4:1

(RES)

Physical Outputs

Can not turn off CYL_1, CYL_2, or CYL_3 when paused.

On reset, do not unclamp until in vertical position.

Can holder cylinder
control, on to clamp
can into rotator

CYL_1

O:2/0

STEP 4

B20/4

STEP 5

B20/5

STEP 6

B20/6

STEP 7

B20/7

INT RESET

B3/1

Vertical position
limit switch, on
(closed) when
rotator in vertical
position

LS_5

I:1/7

STEP 5

B20/5

STEP 6

B20/6

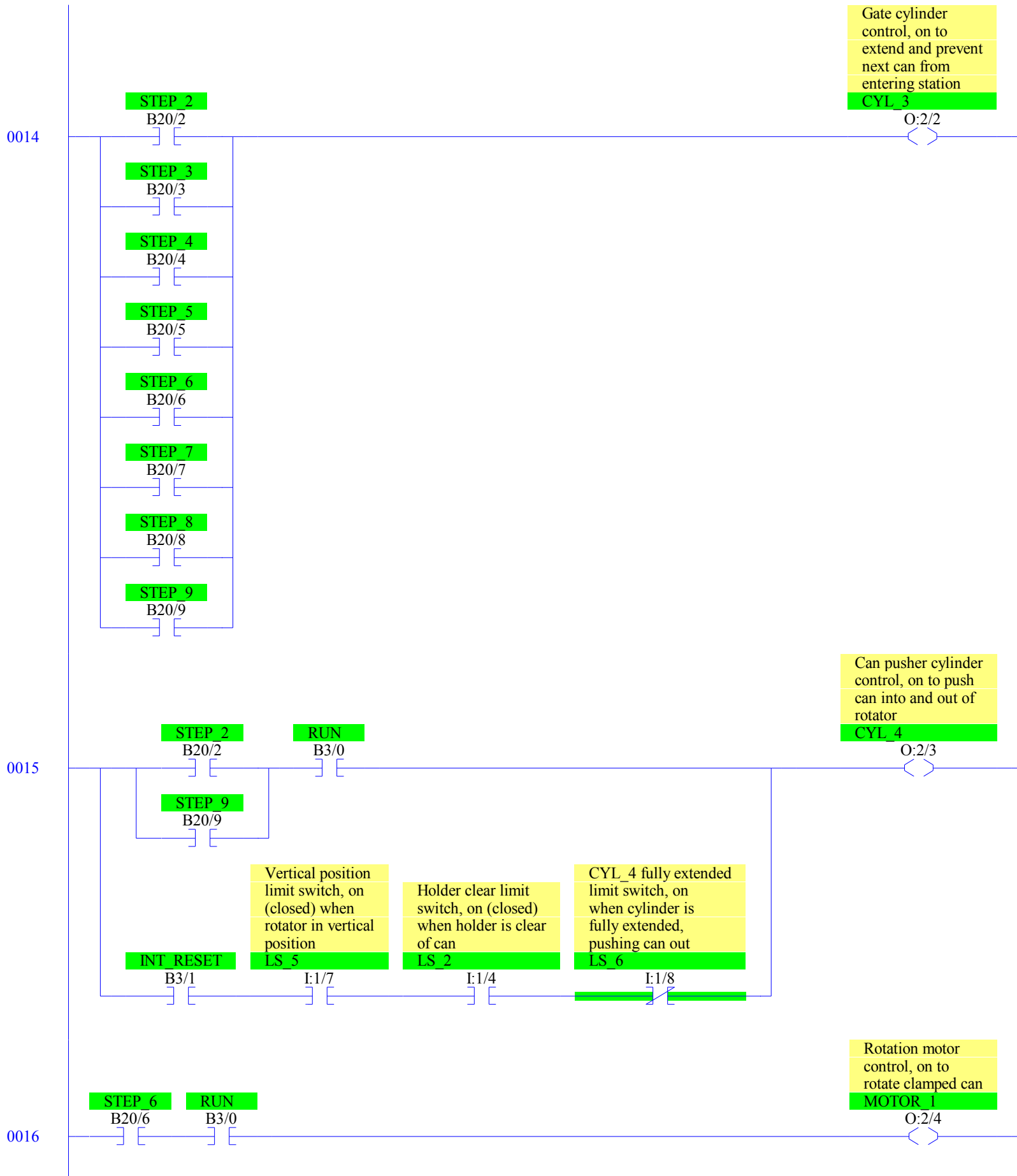
Tipper cylinder
control, on to tip
rotator

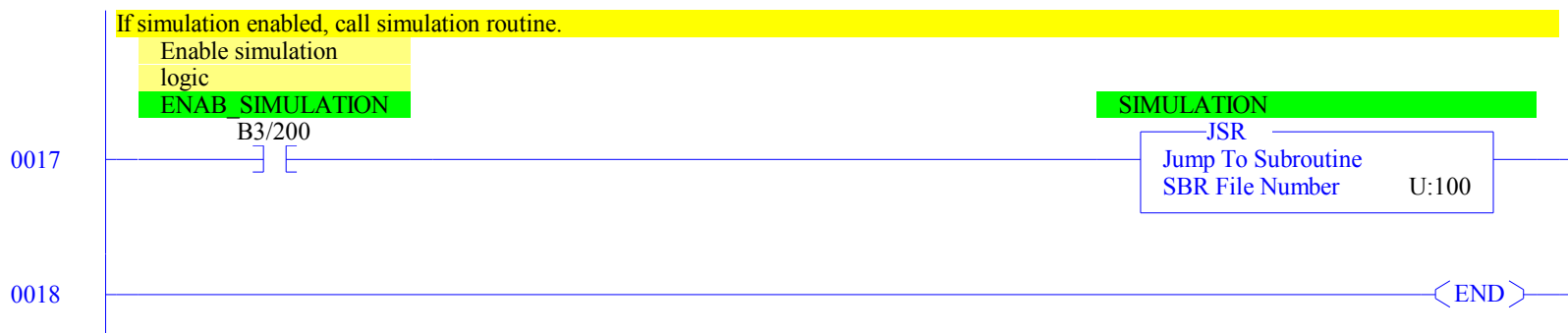
CYL_2

O:2/1

0012

0013





Simulation of erbia can tipper/rotator

Copyright (c) 2013 Dogwood Valley Press, LLC

Horizontal/vertical limit switch simulation: Turn on LS_1 when CYL_2 on for 3 secs. Turn on LS_5 when CYL_2 off for 3 secs.

Tipper cylinder
control, on to tip
rotator

CYL_2

O:2/1

SIM_TMR_0

TON

Timer On Delay

Timer

T200:0

Time Base

0.01

Preset

300<

Accum

0<

<EN>

<DN>

Horizontal position
limit switch, on
(closed) when
rotator is in
horizontal position

SIM_TMR_0/DN

T200:0/DN

I:1/3

Tipper cylinder
control, on to tip
rotator

CYL_2

O:2/1

SIM_TMR_1

TON

Timer On Delay

Timer

T200:1

Time Base

0.01

Preset

300<

Accum

300<

<EN>

<DN>

Vertical position
limit switch, on
(closed) when
rotator in vertical
position

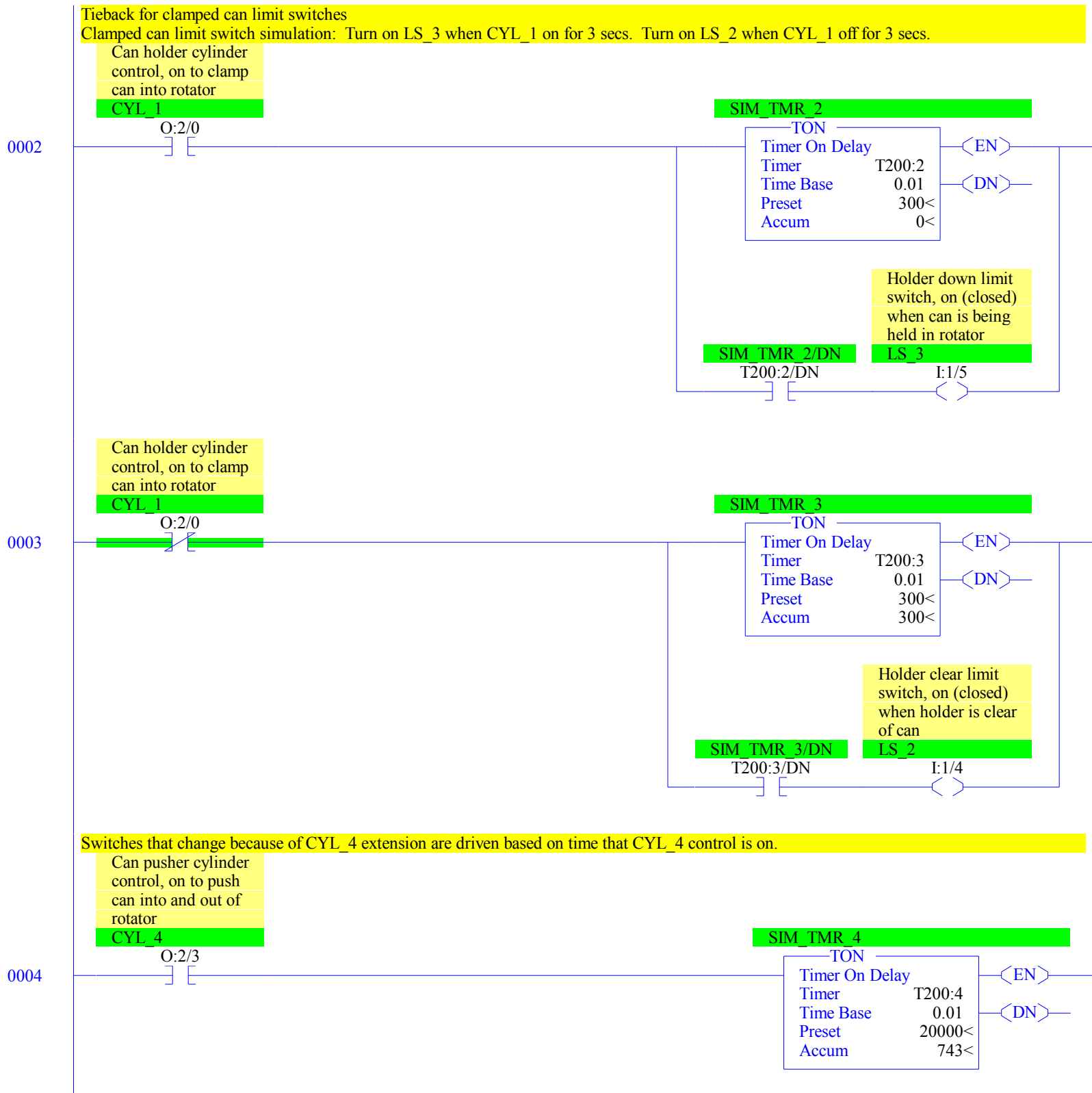
SIM_TMR_1/DN

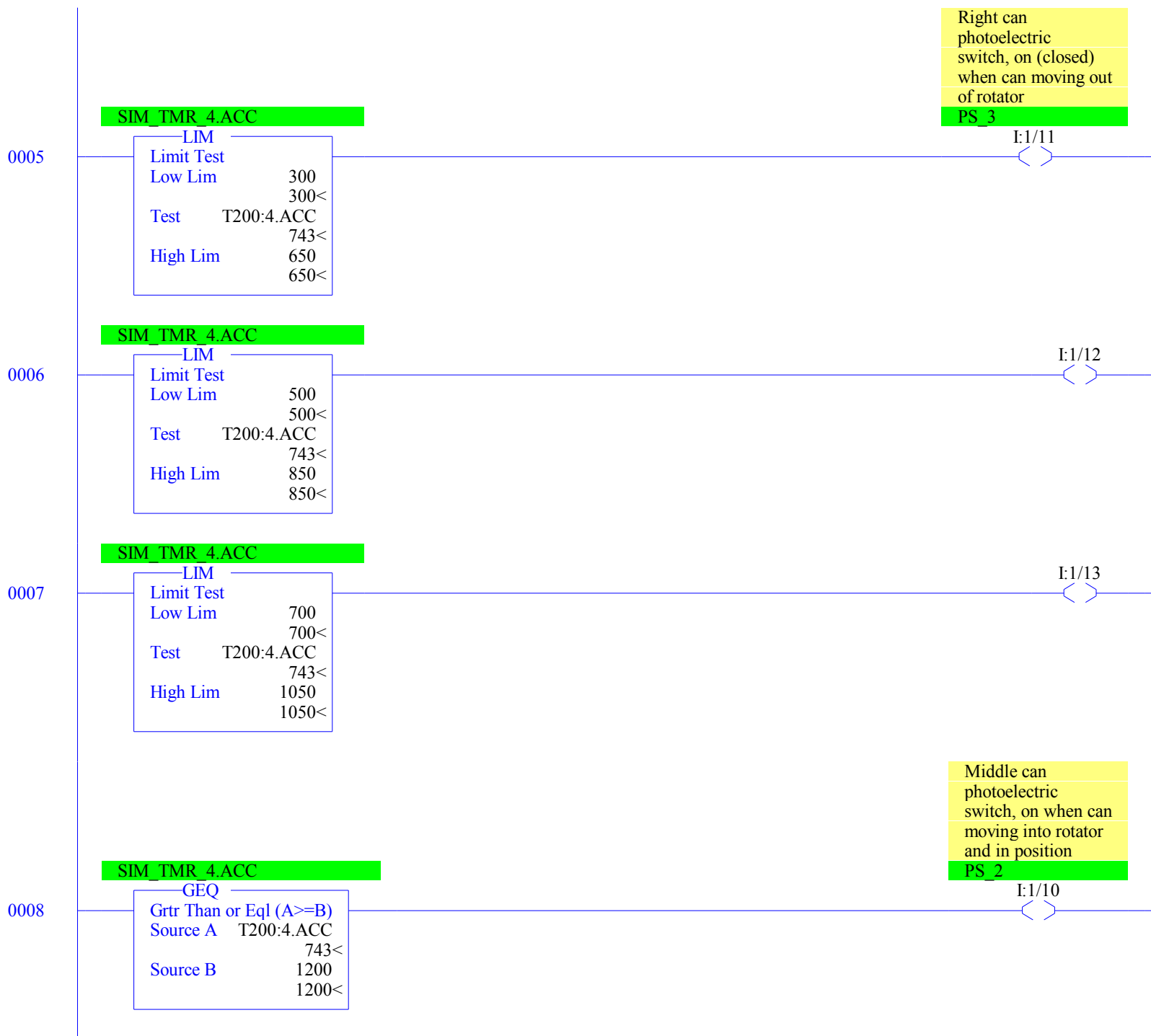
T200:1/DN

I:1/7

0000

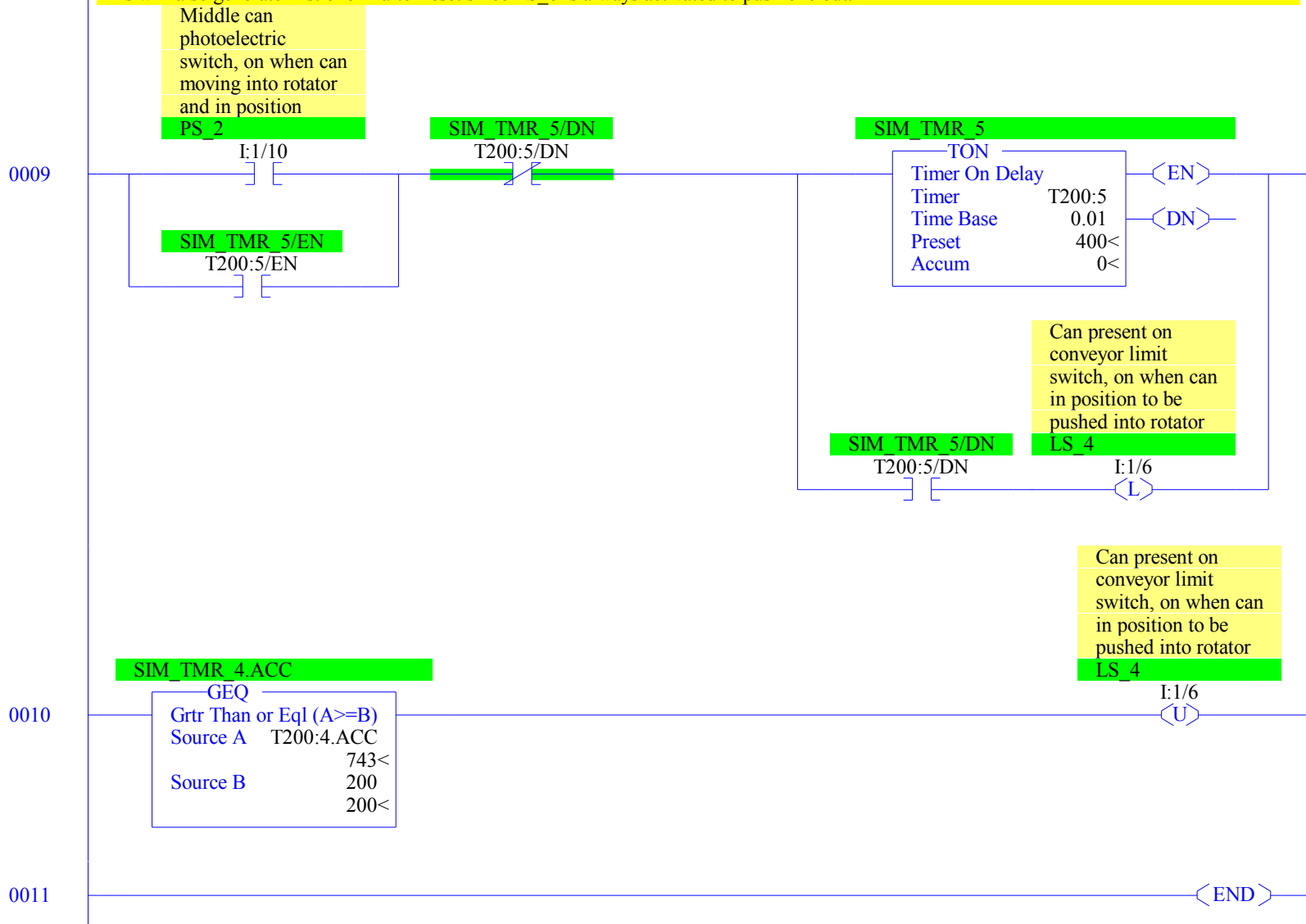
0001





Simulate next one in 4 sec after LS_6 is activated.
Unlatch 2 seconds after CYL_4 activated.

This will also generate first one in after reset since LS_6 is always activated to push one out.



RSLogix 500 Cross Reference Report - Sorted by Address

O:2/0	- {CYL_1} Can holder cylinder control, on to clamp can into rotator OTE - File #2 - 12 XIC - File #100 SIMULATE - 2 XIO - File #100 SIMULATE - 3
O:2/1	- {CYL_2} Tipper cylinder control, on to tip rotator OTE - File #2 - 13 XIC - File #100 SIMULATE - 0 XIO - File #100 SIMULATE - 1
O:2/2	- {CYL_3} Gate cylinder control, on to extend and prevent next can from entering station OTE - File #2 - 14
O:2/3	- {CYL_4} Can pusher cylinder control, on to push can into and out of rotator OTE - File #2 - 15 XIC - File #100 SIMULATE - 4
O:2/4	- {MOTOR_1} Rotation motor control, on to rotate clamped can OTE - File #2 - 16
I:1/0	- {START_PB} Start push button, on when starting XIC - File #2 - 0
I:1/1	- {STOP_PB} Stop push button, off when stopping XIC - File #2 - 0
I:1/2	- {RESET_PB} Reset push button, on when restoring station to initial state XIC - File #2 - 11
I:1/3	- {LS_1} Horizontal position limit switch, on (closed) when rotator is in horizontal position OTE - File #100 SIMULATE - 0 XIC - File #2 - 6 XIO - File #2 - 2
I:1/4	- {LS_2} Holder clear limit switch, on (closed) when holder is clear of can OTE - File #100 SIMULATE - 3 XIC - File #2 - 2, 9, 15 XIO - File #2 - 11
I:1/5	- {LS_3} Holder down limit switch, on (closed) when can is being held in rotator OTE - File #100 SIMULATE - 2 XIC - File #2 - 5
I:1/6	- {LS_4} Can present on conveyor limit switch, on when can in position to be pushed into rotator OTL - File #100 SIMULATE - 9 OTU - File #100 SIMULATE - 10 XIC - File #2 - 2
I:1/7	- {LS_5} Vertical position limit switch, on (closed) when rotator in vertical position OTE - File #100 SIMULATE - 1 XIC - File #2 - 8, 15 XIO - File #2 - 11, 12
I:1/8	- {LS_6} CYL 4 fully extended limit switch, on when cylinder is fully extended, pushing can out XIC - File #2 - 10 XIO - File #2 - 11, 15
I:1/9	- {PS_1} Left can photoelectric switch, on (closed) when can moving into rotator XIO - File #2 - 2, 3
I:1/10	- {PS_2} Middle can photoelectric switch, on when can moving into rotator and in position OTE - File #100 SIMULATE - 8 XIC - File #2 - 3 File #100 SIMULATE - 9 XIO - File #2 - 2
I:1/11	- {PS_3} Right can photoelectric switch, on (closed) when can moving out of rotator OTE - File #100 SIMULATE - 5 XIO - File #2 - 2

RSLogix 500 Cross Reference Report - Sorted by Address

I:1/12	- OTE - File #100 SIMULATE - 6
I:1/13	- OTE - File #100 SIMULATE - 7
B3/0	- {RUN}
	OTE - File #2 - 0
	XIC - File #2 - 0, 1, 2, 4, 5, 6, 7, 8, 9, 15, 16
	XIO - File #2 - 11
B3/1	- {INT_RESET}
	OTE - File #2 - 11
	XIC - File #2 - 11, 12, 15
	XIO - File #2 - 0
B3/200	- {ENAB_SIMULATION} Enable simulation logic
	XIC - File #2 - 17
T4:0	- {RETRACT TMR} Time retract of CYL -4
	TON - File #2 - 4
T4:0/DN	- XIC - File #2 - 4
T4:1	- {BLEND_TMR} Blend timer, 60 sec
	RTO - File #2 - 7
	RES - File #2 - 7, 11
T4:1/DN	- XIC - File #2 - 7
B20/1	- {STEP_1}
	OTL - File #2 - 1, 10
	OTU - File #2 - 2, 11
	XIC - File #2 - 2
	XIO - File #2 - 1
B20/2	- {STEP_2}
	OTL - File #2 - 2
	OTU - File #2 - 3, 11
	XIC - File #2 - 3, 14, 15
	XIO - File #2 - 1
B20/3	- {STEP_3}
	OTL - File #2 - 3
	OTU - File #2 - 4, 11
	XIC - File #2 - 4, 14
	XIO - File #2 - 1
B20/4	- {STEP_4}
	OTL - File #2 - 4
	OTU - File #2 - 5, 11
	XIC - File #2 - 5, 12, 14
	XIO - File #2 - 1
B20/5	- {STEP_5}
	OTL - File #2 - 5
	OTU - File #2 - 6, 11
	XIC - File #2 - 6, 12, 13, 14
	XIO - File #2 - 1
B20/6	- {STEP_6}
	OTL - File #2 - 6
	OTU - File #2 - 7, 11
	XIC - File #2 - 7, 12, 13, 14, 16
	XIO - File #2 - 1
B20/7	- {STEP_7}
	OTL - File #2 - 7
	OTU - File #2 - 8, 11
	XIC - File #2 - 8, 12, 14
	XIO - File #2 - 1
B20/8	- {STEP_8}
	OTL - File #2 - 8
	OTU - File #2 - 9, 11
	XIC - File #2 - 9, 14
	XIO - File #2 - 1
B20/9	- {STEP_9}
	OTL - File #2 - 9
	OTU - File #2 - 10
	XIC - File #2 - 10, 14, 15
	XIO - File #2 - 1
T200:0	- {SIM_TMR_0}
	TON - File #100 SIMULATE - 0

RSLogix 500 Cross Reference Report - Sorted by Address

```

T200:0/DN  - XIC - File #100 SIMULATE - 0
T200:1      - {SIM_TMR_1}
              TON - File #100 SIMULATE - 1
T200:1/DN  - XIC - File #100 SIMULATE - 1
T200:2      - {SIM_TMR_2}
              TON - File #100 SIMULATE - 2
T200:2/DN  - XIC - File #100 SIMULATE - 2
T200:3      - {SIM_TMR_3}
              TON - File #100 SIMULATE - 3
T200:3/DN  - XIC - File #100 SIMULATE - 3
T200:4      - {SIM_TMR_4}
              TON - File #100 SIMULATE - 4
T200:4.ACC - GEQ - File #100 SIMULATE - 8, 10
              LIM - File #100 SIMULATE - 5, 6, 7
T200:5      - {SIM_TMR_5}
              TON - File #100 SIMULATE - 9
T200:5/DN  - XIC - File #100 SIMULATE - 9
              XIO - File #100 SIMULATE - 9
T200:5/EN  - XIC - File #100 SIMULATE - 9
U:100      - {SIMULATION}
              JSR - File #2 - 17

```