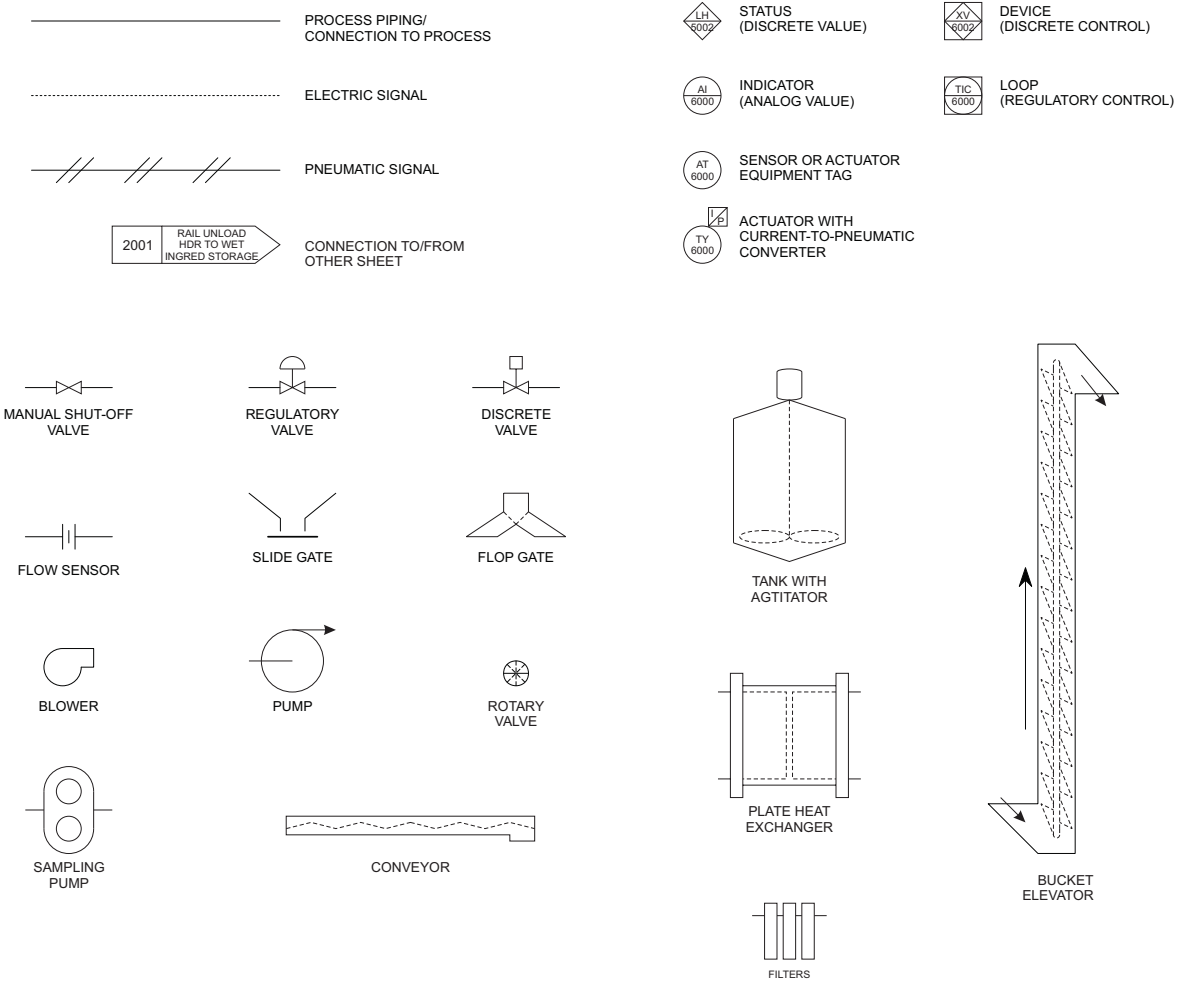


DRAWING INDEX

DWG. NO.	DESCRIPTION
0001	INDEX AND KEY
0002	PROCESS FLOW DIAGRAM
1001	WET UNLOAD CELL P&ID
1002	WET INGREDIENT STORAGE P&ID
1003	DRY ADDITIVE UNIT P&ID
1004	WET ADDITIVE UNIT P&ID
2001	RAIL DRY UNLOAD UNIT P&ID
2002	DRY STORAGE LOADIN AND LOADOUT UNITS P&ID
2003	TRUCK DRY UNLOAD UNIT P&ID
2004	TRUCK POWDER UNLOAD UNIT P&ID
2005	RAIL POWDER UNLOAD UNIT P&ID
3000	BLEND UNIT P&ID
3001	REACTOR 1 UNIT P&ID
3002	REACTOR 2 UNIT P&ID
3003	REACTOR 3 UNIT P&ID
3008	QA SAMPLING UNIT P&ID
4001	ION EXCHANGE 1 & 2 UNIT P&ID
4002	ION EXCHANGE 3 & 4 UNIT P&ID
5001	PRODUCT STORAGE 1 UNIT P&ID
5002	TRUCK/RAIL LOADOUT UNIT P&ID
5003	PRODUCT STORAGE 2 UNIT P&ID
6001	CLEAN-IN-PLACE UNIT P&ID

DRAWING SYMBOL KEY



0001

SCALE - NONE	DATE	REV NO.	DESCRIPTION	DATE	BY	CHKD.	APRD.	REV NO.	DESCRIPTION	DATE	BY	CHKD.	APRD.
DRAWN BY: KTE	9-08-04	△	ADD DWGS 1003 AND 2003 TO INDEX	9-08-13	KTE	CRC	JKS	△	-	-	-	-	-
CHECKED: CRC	9-24-04	△	ADD DWGS TO INDEX	9-03-14	KTE	CRC	JKS	△	-	-	-	-	-
APPROVED: JKS	9-28-04	△	-	-	-	-	-	△	-	-	-	-	-
APPROVED: JPS	10-01-04	△	-	-	-	-	-	△	-	-	-	-	-

K Process
ABC Products

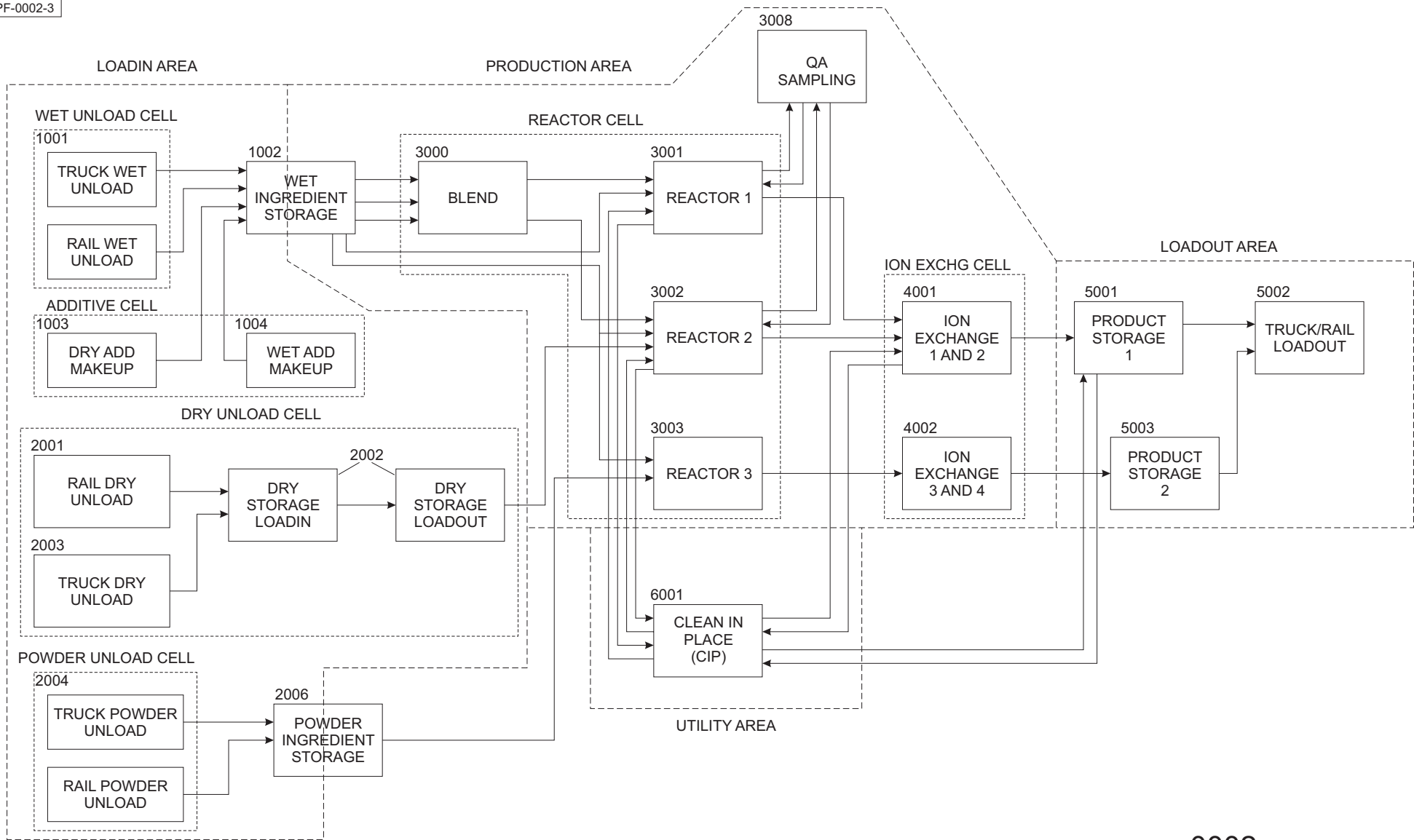
DVP Engineering

Anytown, MO

-	AS BUILT
-	FOR CONSTRUCTION
-	FOR BIDDING ONLY
-	REFERENCE ONLY
XXX	PRELIMINARY

DRAWING INDEX & KEY
0001
INDEX

CAD REF. NO. 002PF0002
PROJ. NO. -
A. F. E. NO. -
DRAWING NO. E-002-IN-0001-2



0002

SCALE - NONE	DATE	REV NO.	DESCRIPTION	DATE	BY	CHKD.	APRD.	REV NO.	DESCRIPTION	DATE	BY	CHKD.	APRD.
DRAWN BY: KTE	9-08-04	△	CORRECT BOUNDS AROUND LOADOUT AREA	9-03-07	KTE	-	-	△		-	-	-	-
CHECKED: CRC	9-24-04	△	ADD TRUCK DRY UNLOAD & DRY ADD UNITS	9-02-13	KTE	-	-	△		-	-	-	-
APPROVED: JKS	9-28-04	△	ADD REACTOR 3 & ASSOCIATED UNITS	9-02-14	KTE	-	-	△		-	-	-	-
APPROVED: JPS	10-01-04	△	-	-	-	-	-	△		-	-	-	-

K Process
ABC Products

DVP Engineering

Anytown, MO

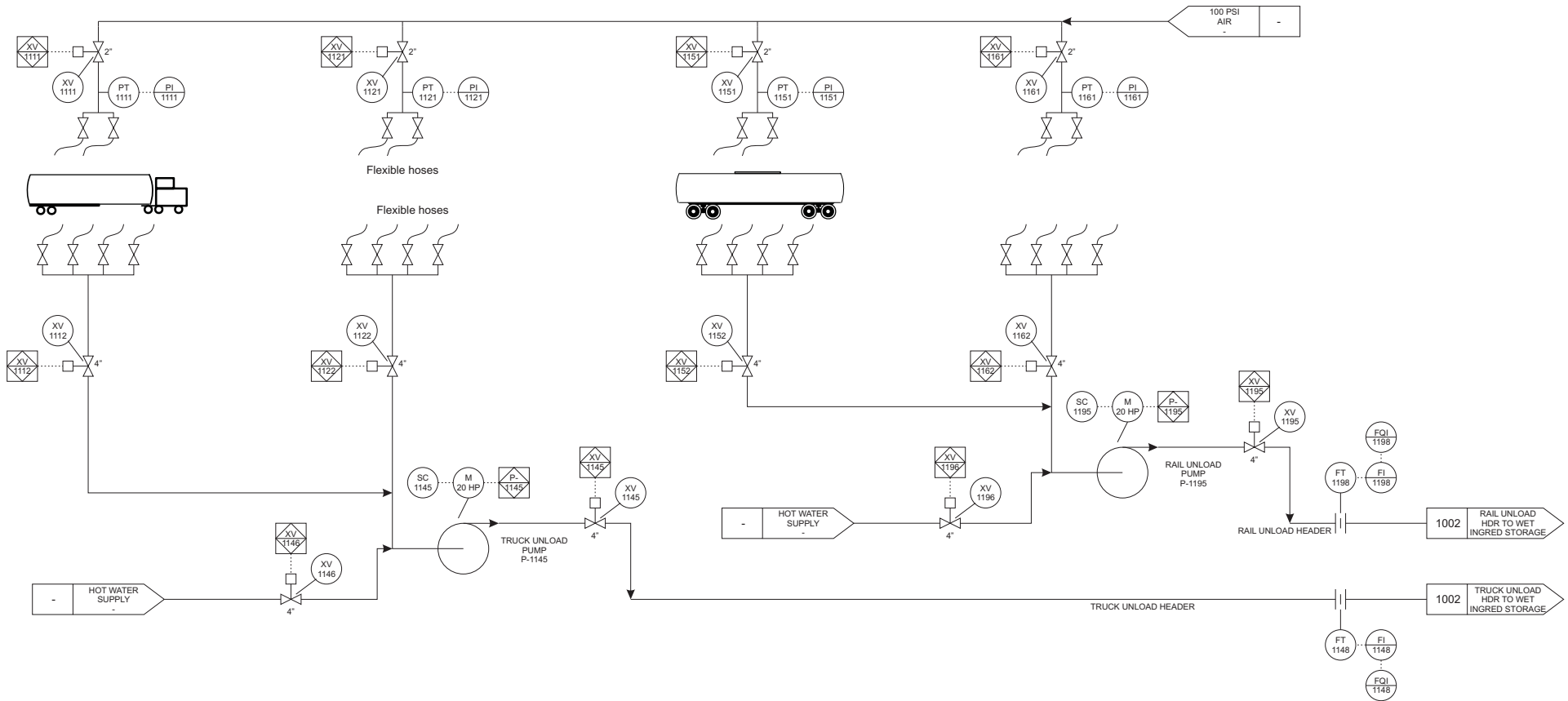
-	AS BUILT
-	FOR CONSTRUCTION
-	FOR BIDDING ONLY
-	REFERENCE ONLY
xxx	PRELIMINARY

OVERALL PROCESS
0002
PFD

CAD REF. NO. 002PF0002
PROJ. NO. -
A. F. E. NO. -
DRAWING NO. E-002-PF-0002-3

TRUCK WET UNLOADING STATIONS

RAILCAR WET UNLOADING STATIONS



1001

SCALE - NONE	DATE	REV. NO.	DESCRIPTION	DATE	BY	CHKD.	APRD.	REV. NO.	DESCRIPTION	DATE	BY	CHKD.	APRD.
DRAWN BY: KTE	9-22-04	1	HOT WATER USED TO RINSE HEADERS	10-14-04	KTE	CRC	JKS	1		-	-	-	-
CHECKED: CRC	9-24-04	2	ADD FLOW ACCUMULATORS	10-20-04	KTE	CRC	JKS	2		-	-	-	-
APPROVED: JKS	9-28-04	3	CORRECT OUT STREAM SHEET NUMBERS	9-5-07	KTE	CRC	JKS	3		-	-	-	-
APPROVED: JPS	10-01-04	4		-	-	-	-	4		-	-	-	-

**K Process
ABC Products**

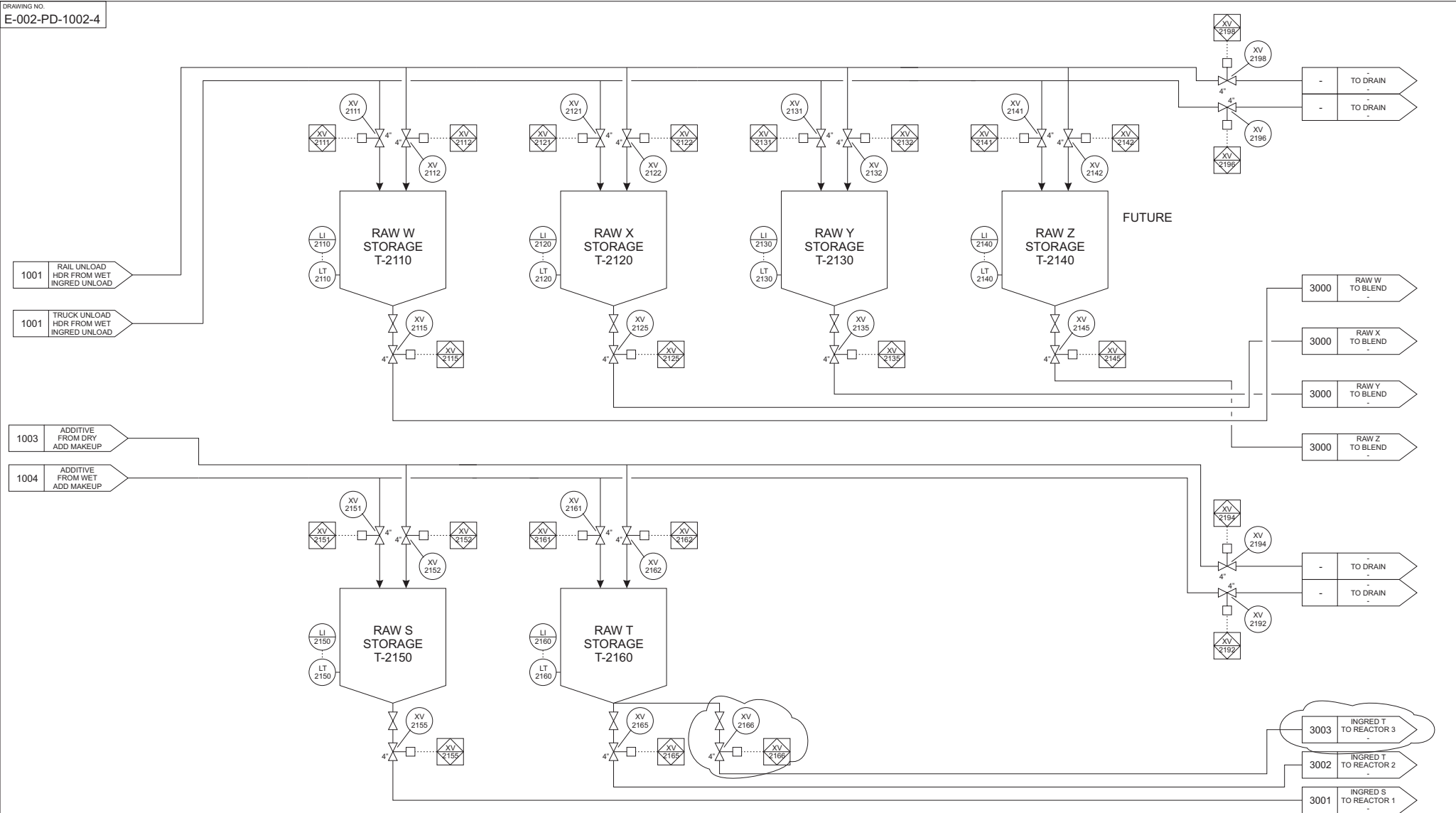
DVP Engineering

AS BUILT
FOR CONSTRUCTION
FOR BIDDING ONLY
REFERENCE ONLY

**WET UNLOAD
1001
P & ID**

CAD REF. NO. 002PD1001
PROJ. NO. 002
A. F. E. NO. -
DRAWING NO.
E-002-PD-1001-3

DRAWING NO.
E-002-PD-1002-4

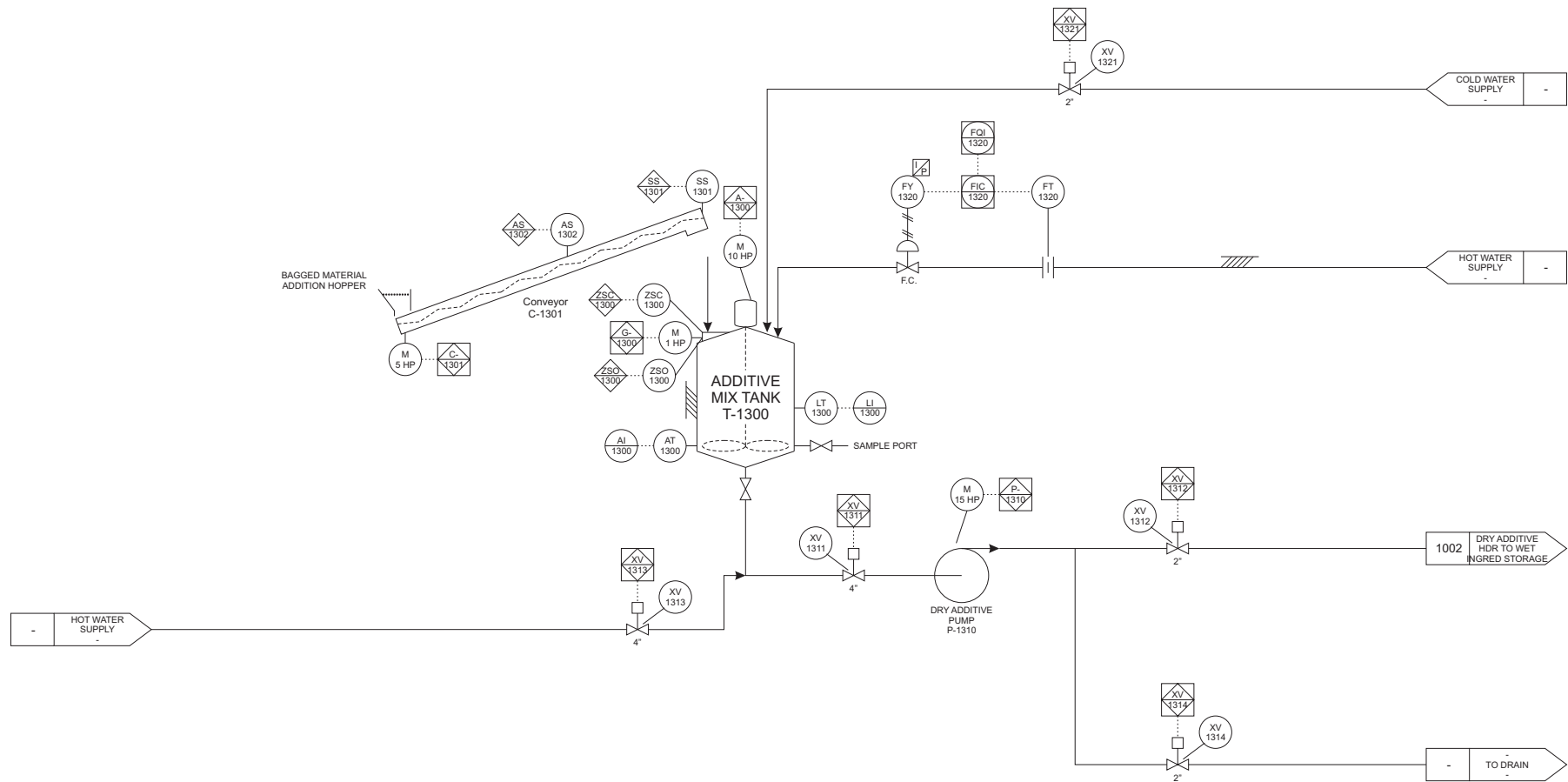


1002

SCALE - NONE	DATE	REV NO.	DESCRIPTION	DATE	BY	CHKD.	APRD.	REV NO.	DESCRIPTION	DATE	BY	CHKD.	APRD.
DRAWN BY: KTE	9-22-04	1	DRAIN VALVES ADDED	10-05-03	KTE	CRC	JKS	1		-	-	-	-
CHECKED: CRC	9-24-04	2	RAW Z FUTURE B TANKS NOW S AND T	10-08-04	KTE	CRC	JKS	2		-	-	-	-
APPROVED: JKS	9-28-04	3	S AND T STORAGE FROM ADDITIVE CELL	9-02-13	KTE	CRC	JKS	3		-	-	-	-
APPROVED: JPS	10-01-04	4	T PATH TO REACTOR 3 ADDED	9-02-14	KTE	CRC	JKS	4		-	-	-	-

K Process ABC Products	-	AS BUILT	WET STORAGE 1002 P & ID	CAD REF. NO. 002PD1002
	-	FOR CONSTRUCTION		
	-	FOR BIDDING ONLY		
	-	REFERENCE ONLY		
DVP Engineering	Anytown, MO	XXX	PRELIMINARY	DRAWING NO. E-002-PD-1002-4

DRAWING NO.
E-002-PD-1003-0



1003

SCALE - NONE	DATE	REV. NO.	DESCRIPTION	DATE	BY	CHKD.	APRD.	REV. NO.	DESCRIPTION	DATE	BY	CHKD.	APRD.
DRAWN BY: KTE	9-02-13	1		-	-	-	-	1		-	-	-	-
CHECKED: CRC	9-02-13	2		-	-	-	-	2		-	-	-	-
APPROVED: JKS	9-03-13	3		-	-	-	-	3		-	-	-	-
APPROVED: JPS	9-03-13	4		-	-	-	-	4		-	-	-	-

K Process
ABC Products

DVP Engineering

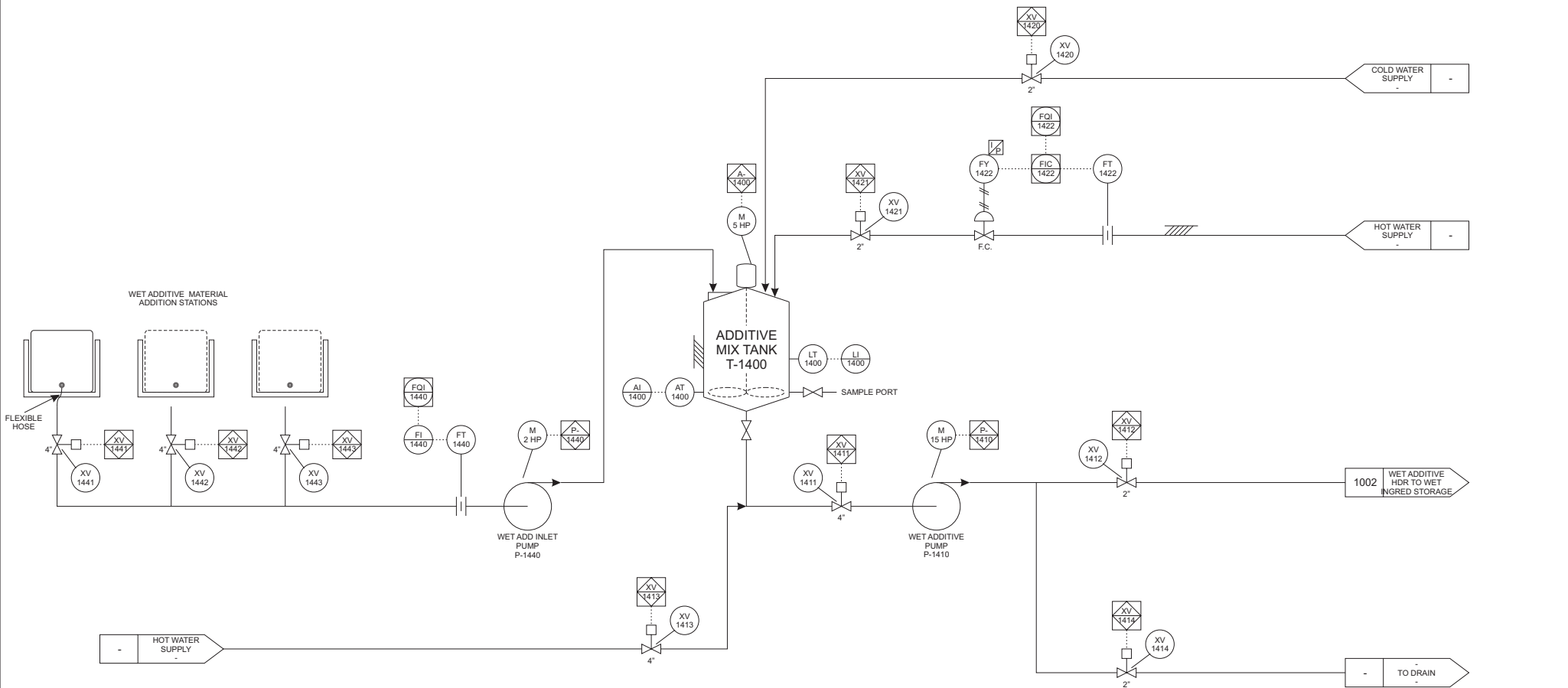
Anytown, MO

-	AS BUILT
-	FOR CONSTRUCTION
-	FOR BIDDING ONLY
-	REFERENCE ONLY
XXX	PRELIMINARY

DRY ADDITIVE
1003
P & ID

CAD REF. NO. 002PD1003
PROJ. NO. -
A. F. E. NO. -
DRAWING NO.
E-002-PD-1003-0

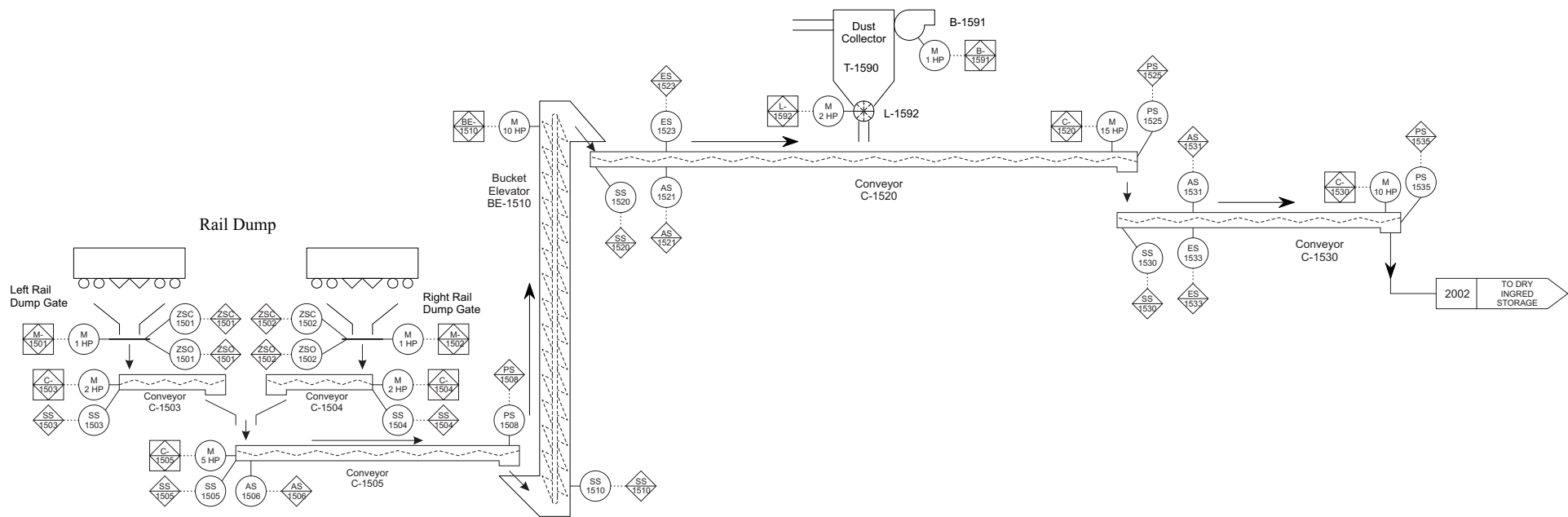
DRAWING NO.
E-002-PD-1004-0



1004

SCALE - NONE	DATE	REV. NO.	DESCRIPTION	DATE	BY	CHKD.	APRD.	REV. NO.	DESCRIPTION	DATE	BY	CHKD.	APRD.
DRAWN BY: KTE	9-02-14	1	-	-	-	-	-	1	-	-	-	-	-
CHECKED: CRC	9-02-14	2	-	-	-	-	-	2	-	-	-	-	-
APPROVED: JKS	9-03-14	3	-	-	-	-	-	3	-	-	-	-	-
APPROVED: JPS	9-03-14	4	-	-	-	-	-	4	-	-	-	-	-

K Process ABC Products	-	AS BUILT	DRY ADDITIVE 1004 P & ID	CAD REF. NO. 002PD1004
	-	FOR CONSTRUCTION		PROJ. NO. -
	-	FOR BIDDING ONLY		A. F. E. NO. -
	-	REFERENCE ONLY		
DVP Engineering	Anytown, MO	XXX	PRELIMINARY	E-002-PD-1004-0



2001

SCALE - NONE	DATE	REV NO.	DESCRIPTION	DATE	BY	CHKD.	APRD.	REV NO.	DESCRIPTION	DATE	BY	CHKD.	APRD.
DRAWN BY: KTE	9-22-04	Δ	ADD C-1530 CONVEYOR	10-14-04	KTE	CRC	JKS	Δ		-	-	-	-
CHECKED: CRC	9-24-04	Δ	ADD PLUG SENSORS	10-21-04	KTE	CRC	JKS	Δ		-	-	-	-
APPROVED: JKS	9-28-04	Δ		-	-	-	-	Δ		-	-	-	-
APPROVED: JPS	10-01-04	Δ		-	-	-	-	Δ		-	-	-	-

K Process
ABC Products

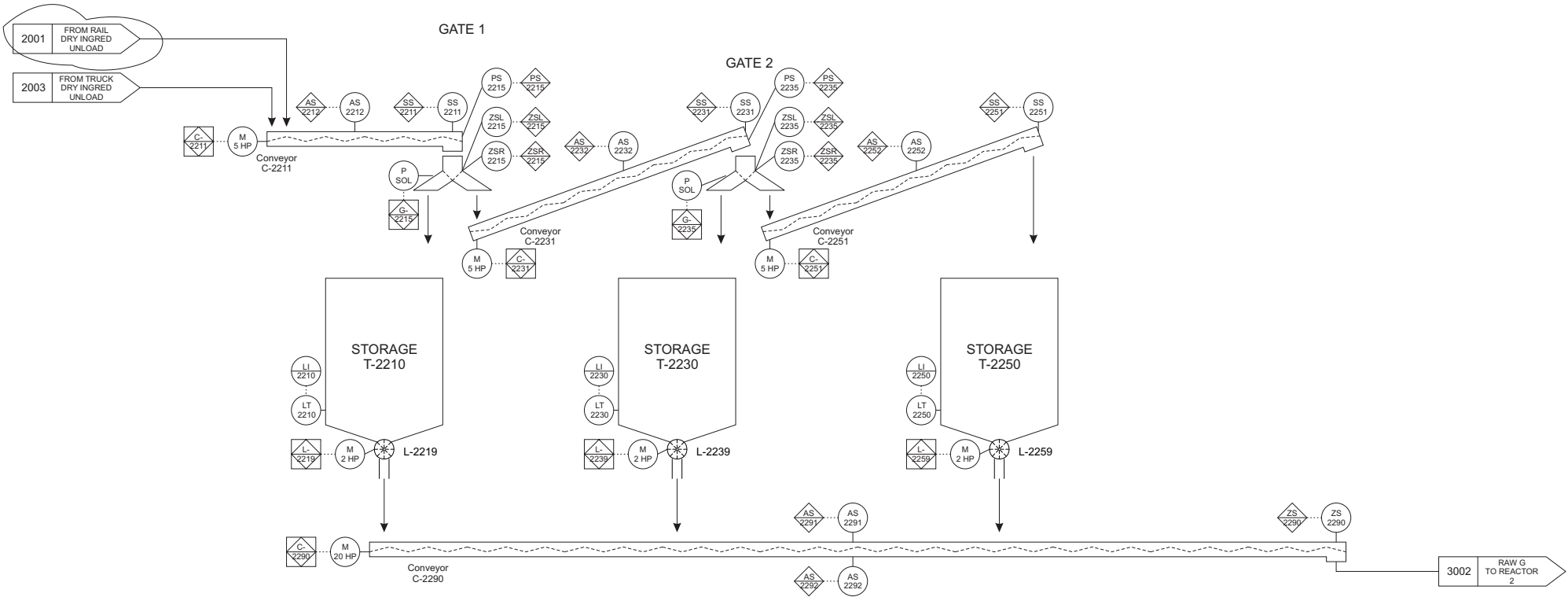
DVP Engineering

Anytown, MO

-	AS BUILT
-	FOR CONSTRUCTION
-	FOR BIDDING ONLY
-	REFERENCE ONLY
XXX	PRELIMINARY

RAIL DRY UNLOAD
2001
P & ID

CAD REF. NO. 002PD2001
PROJ. NO. -
A. F. E. NO. -
DRAWING NO. E-002-PD-2001-1

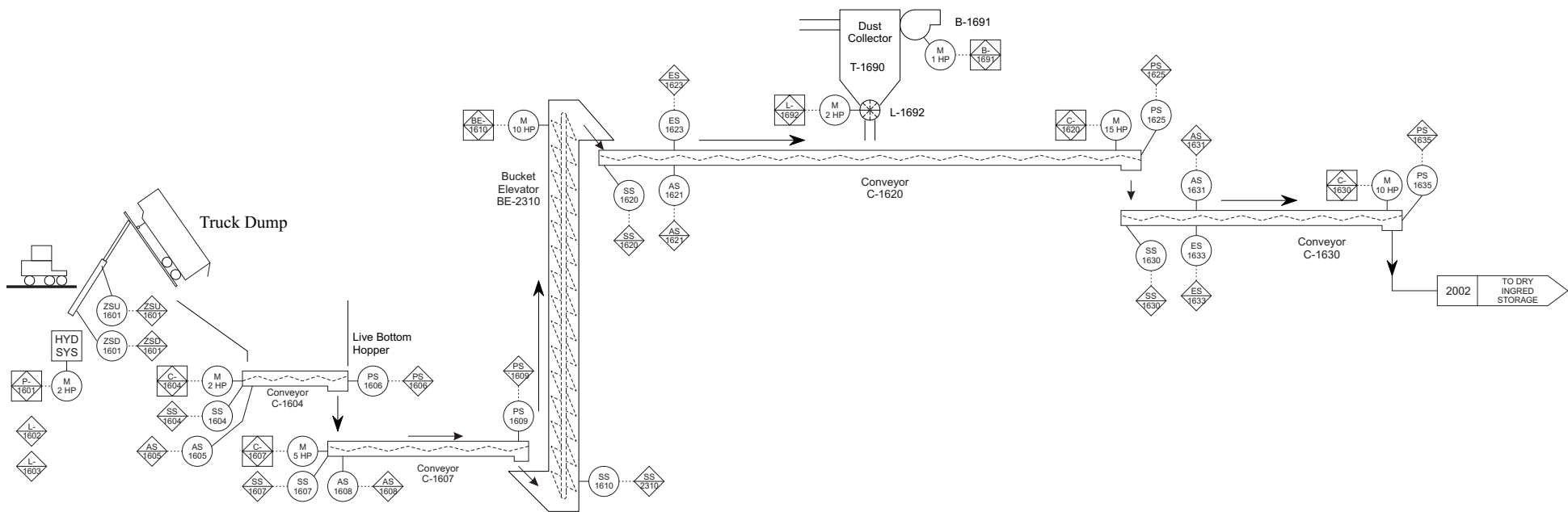


2002

SCALE - NONE	DATE	REV NO.	DESCRIPTION	DATE	BY	CHKD.	APRD.	REV NO.	DESCRIPTION	DATE	BY	CHKD.	APRD.
DRAWN BY: KTE	9-22-04	Δ	REVISED FLOP GATE DEVICE TAGS	10-06-04	KTE	CRC	JKS	Δ	-	-	-	-	-
CHECKED: CRC	9-24-04	Δ	ADD PLUG SENSORS	10-15-04	KTE	CRC	JKS	Δ	-	-	-	-	-
APPROVED: JKS	9-28-04	Δ	ADD GATE 2 G-2235 DEVICE TAG	9-14-05	KTE	CRC	JKS	Δ	-	-	-	-	-
APPROVED: JPS	10-01-04	Δ	ADD INPUT FROM TRUCK DRY INGRED-	9-02-13	KTE	CRC	JKS	Δ	-	-	-	-	-

K Process ABC Products	-	AS BUILT
	-	FOR CONSTRUCTION
	-	FOR BIDDING ONLY
	-	REFERENCE ONLY
DVP Engineering	Anytown, MO	XXX PRELIMINARY

DRY STORAGE 2002 P & ID	CAD REF. NO. 002PD2002
	PROJ. NO. -
	A.F.E. NO. -
	DRAWING NO. E-002-PD-2002-4



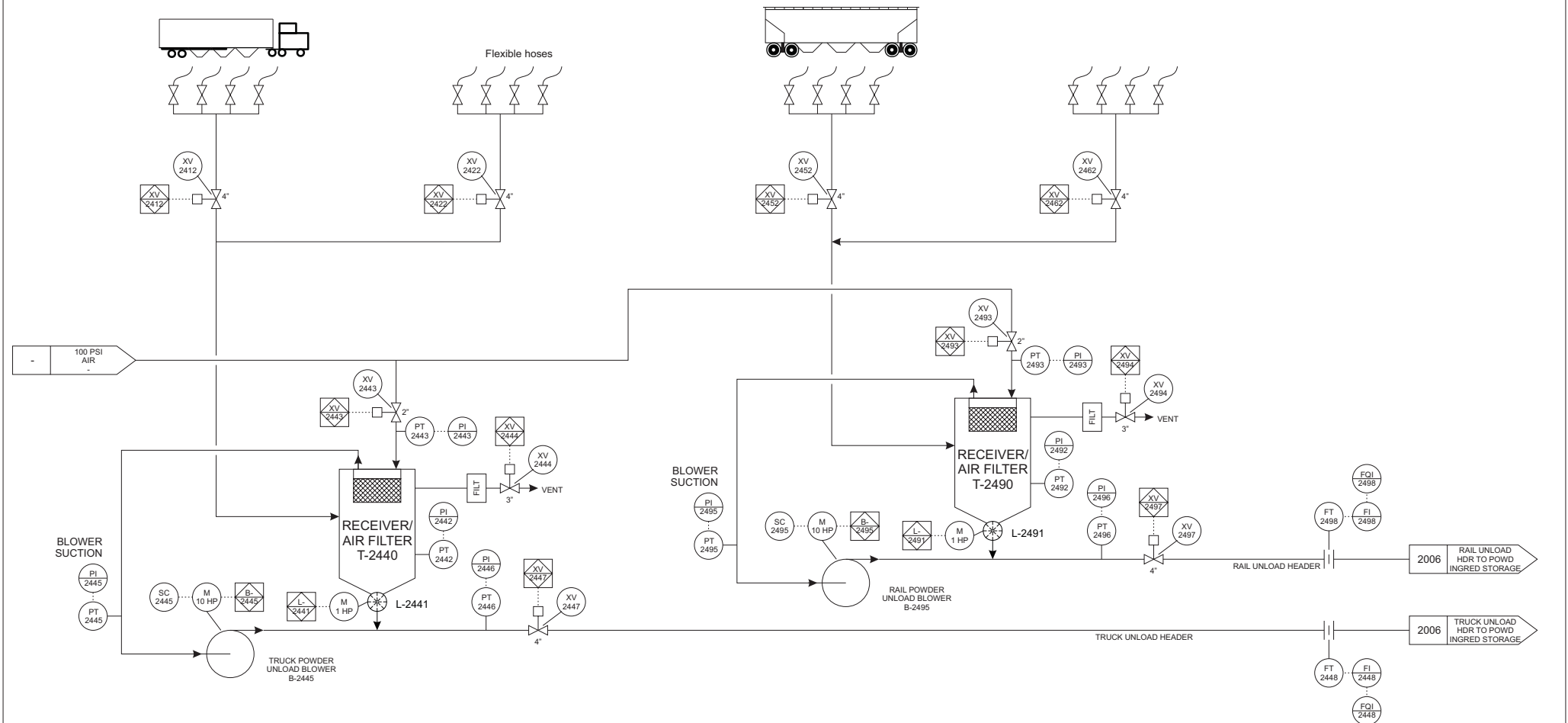
2003

SCALE - NONE	DATE	REV NO.	DESCRIPTION	DATE	BY	CHKD.	APRD.	REV NO.	DESCRIPTION	DATE	BY	CHKD.	APRD.
DRAWN BY: KTE	9-02-13	1		-	-	-	-	1		-	-	-	-
CHECKED: CRC	9-02-13	1		-	-	-	-	1		-	-	-	-
APPROVED: JKS	9-03-13	1		-	-	-	-	1		-	-	-	-
APPROVED: JPS	9-03-13	1		-	-	-	-	1		-	-	-	-

K Process ABC Products	-	AS BUILT	TRUCK DRY UNLOAD 2003 P & ID	CAD REF. NO. 002PD2003
	-	FOR CONSTRUCTION		PROJ. NO. -
	-	FOR BIDDING ONLY		A. F. E. NO. -
	-	REFERENCE ONLY		
DVP Engineering	Anytown, MO	XXX	PRELIMINARY	DRAWING NO. E-002-PD-2003-0

TRUCK POWDER UNLOADING STATIONS

RAILCAR POWDER UNLOADING STATIONS



2004

SCALE - NONE	DATE	REV. NO.	DESCRIPTION	DATE	BY	CHKD.	APRD.	REV. NO.	DESCRIPTION	DATE	BY	CHKD.	APRD.
DRAWN BY: KTE	8-25-14	1		-	-	-	-	1		-	-	-	-
CHECKED: CRC	8-26-14	2		-	-	-	-	2		-	-	-	-
APPROVED: JKS	8-26-14	3		-	-	-	-	3		-	-	-	-
APPROVED: JPS	9-02-14	4		-	-	-	-	4		-	-	-	-

K Process
ABC Products

DVP Engineering

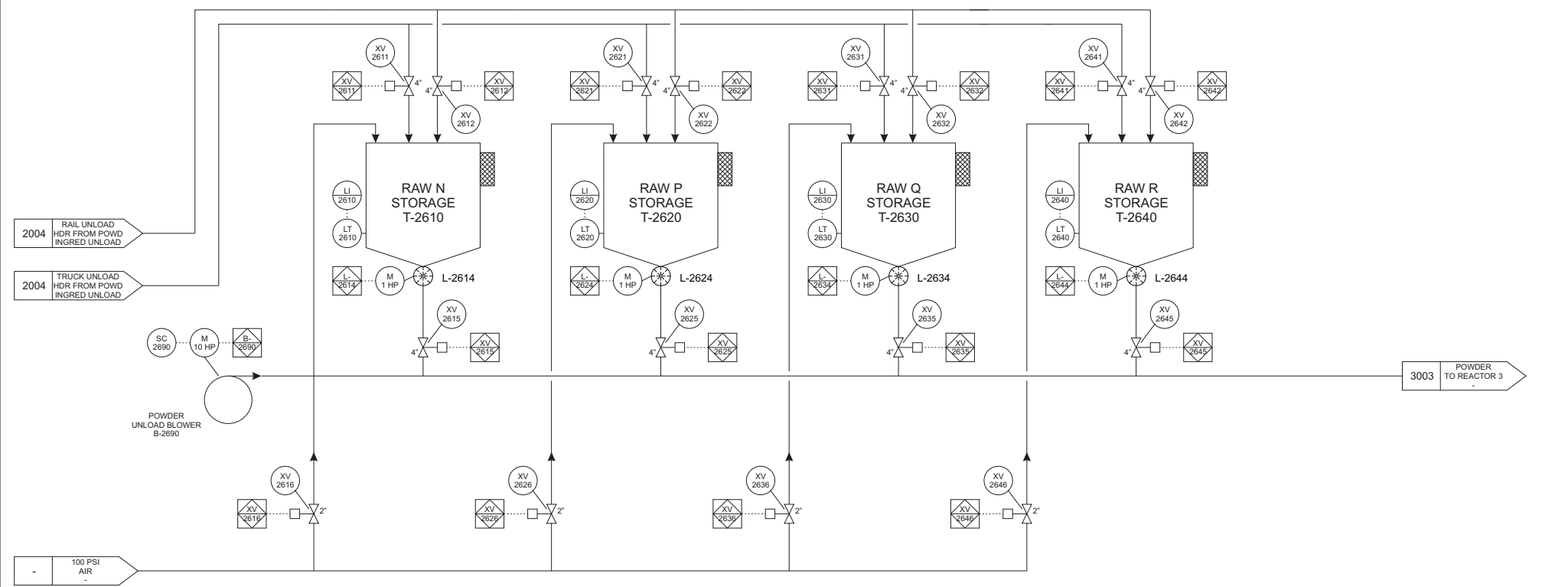
Anytown, MO

-	AS BUILT
-	FOR CONSTRUCTION
-	FOR BIDDING ONLY
-	REFERENCE ONLY
XXX	PRELIMINARY

POWDER UNLOAD
2004
P & ID

CAD REF. NO. 002PD2004
PROJ. NO. 002
A. F. E. NO. -
DRAWING NO. E-002-PD-2004-0

DRAWING NO.
E-002-PD-2006-0

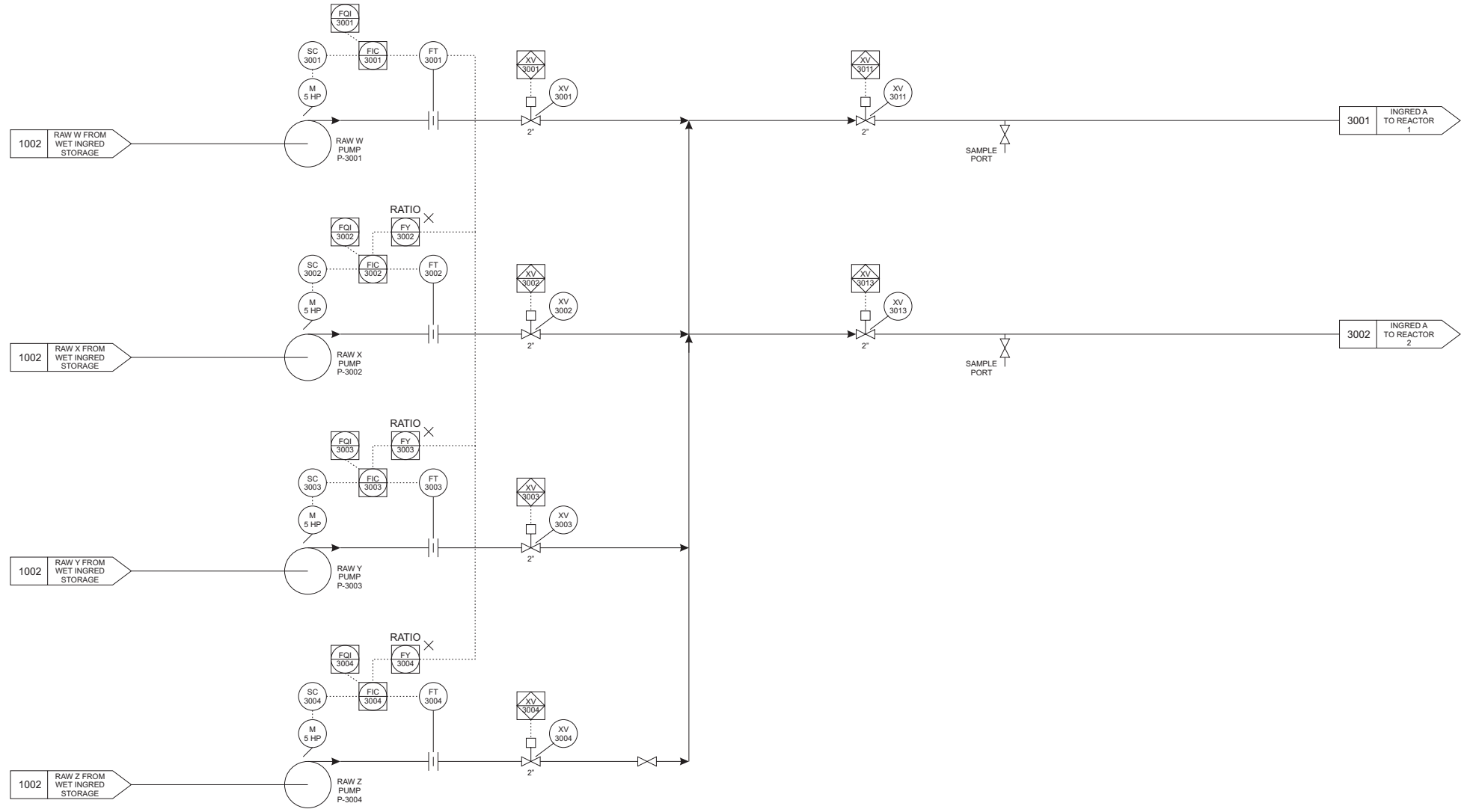


2006

SCALE - NONE	DATE	REV. NO.	DESCRIPTION	DATE	BY	CHKD.	APRD.	REV. NO.	DESCRIPTION	DATE	BY	CHKD.	APRD.
DRAWN BY: KTE	8-26-14	1	-	-	-	-	-	1	-	-	-	-	-
CHECKED: CRC	8-26-14	1	-	-	-	-	-	1	-	-	-	-	-
APPROVED: JKS	8-26-14	1	-	-	-	-	-	1	-	-	-	-	-
APPROVED: JPS	9-02-14	1	-	-	-	-	-	1	-	-	-	-	-

K Process ABC Products DVP Engineering Anytown, MO	-	AS BUILT	POWDER STORAGE 2006 P & ID	CAD REF. NO. 002PD2006
	-	FOR CONSTRUCTION		PROJ. NO. -
	-	FOR BIDDING ONLY		A. F. E. NO. -
	-	REFERENCE ONLY		DRAWING NO. E-002-PD-2006-0
XXX		PRELIMINARY		

DRAWING NO.
E-002-PD-3000-2

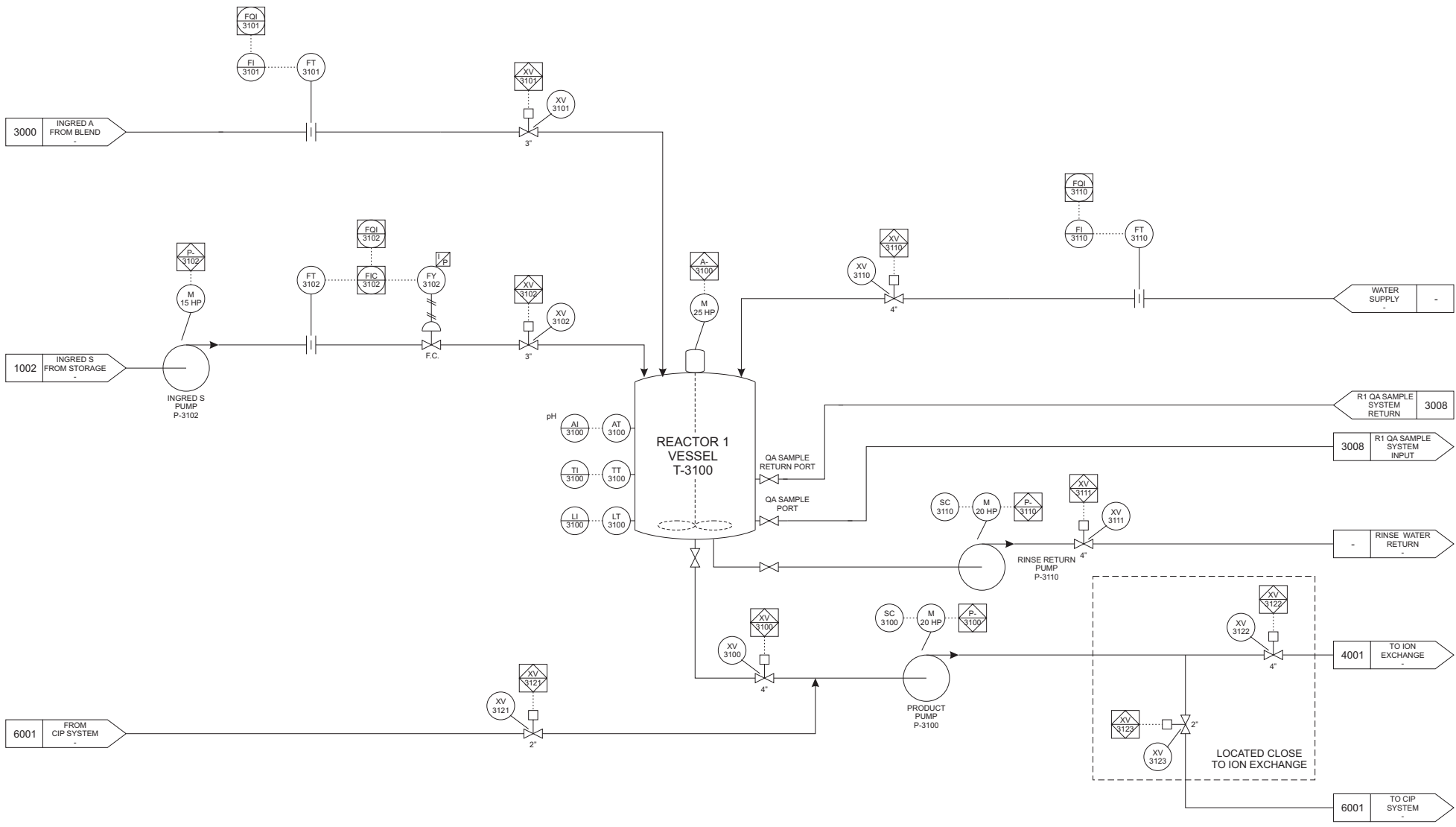


3000

SCALE - NONE	DATE	REV NO.	DESCRIPTION	DATE	BY	CHKD.	APRD.	REV NO.	DESCRIPTION	DATE	BY	CHKD.	APRD.
DRAWN BY: KTE	9-22-04	Δ	SURGE TANKS REMOVED	10-14-04	KTE	CRC	JKS	Δ	-	-	-	-	-
CHECKED: CRC	9-24-04	Δ	CORRECT IN STREAM SHEET NUMBERS	9-05-07	KTE	CRC	JKS	Δ	-	-	-	-	-
APPROVED: JKS	9-28-04	Δ	-	-	-	-	-	Δ	-	-	-	-	-
APPROVED: JPS	10-01-04	Δ	-	-	-	-	-	Δ	-	-	-	-	-

K Process ABC Products	-	AS BUILT	BLEND 3000 P & ID	CAD REF. NO.	002PD3000
	-	FOR CONSTRUCTION		PROJ. NO.	-
	-	FOR BIDDING ONLY		A. F. E. NO.	-
	-	REFERENCE ONLY		DRAWING NO.	
DVP Engineering	Anytown, MO	XXX	PRELIMINARY	E-002-PD-3000-2	

DRAWING NO.
E-002-PD-3001-3



3001

SCALE - NONE	DATE	REV NO.	DESCRIPTION	DATE	BY	CHKD.	APRD.	REV NO.	DESCRIPTION	DATE	BY	CHKD.	APRD.
DRAWN BY: KTE	9-21-04	Δ	ADDED QA SAMPLE VALVES	10-05-04	KTE	CRC	JKS	Δ	-	-	-	-	-
CHECKED: CRC	9-24-04	Δ	DELETE PID LOOPS	10-18-04	KTE	CRC	JKS	Δ	-	-	-	-	-
APPROVED: JKS	9-28-04	Δ	CORRECT INGRED S STREAM SHEET NUMBER	9-05-07	KTE	CRC	JKS	Δ	-	-	-	-	-
APPROVED: JPS	10-01-04	Δ	-	-	-	-	-	Δ	-	-	-	-	-

K Process

ABC Products

DVP Engineering

- AS BUILT

- FOR CONSTRUCTION

- FOR BIDDING ONLY

- REFERENCE ONLY

XXX PRELIMINARY

REACTOR 1

3001

P & ID

CAD REF. NO. 002PD3001

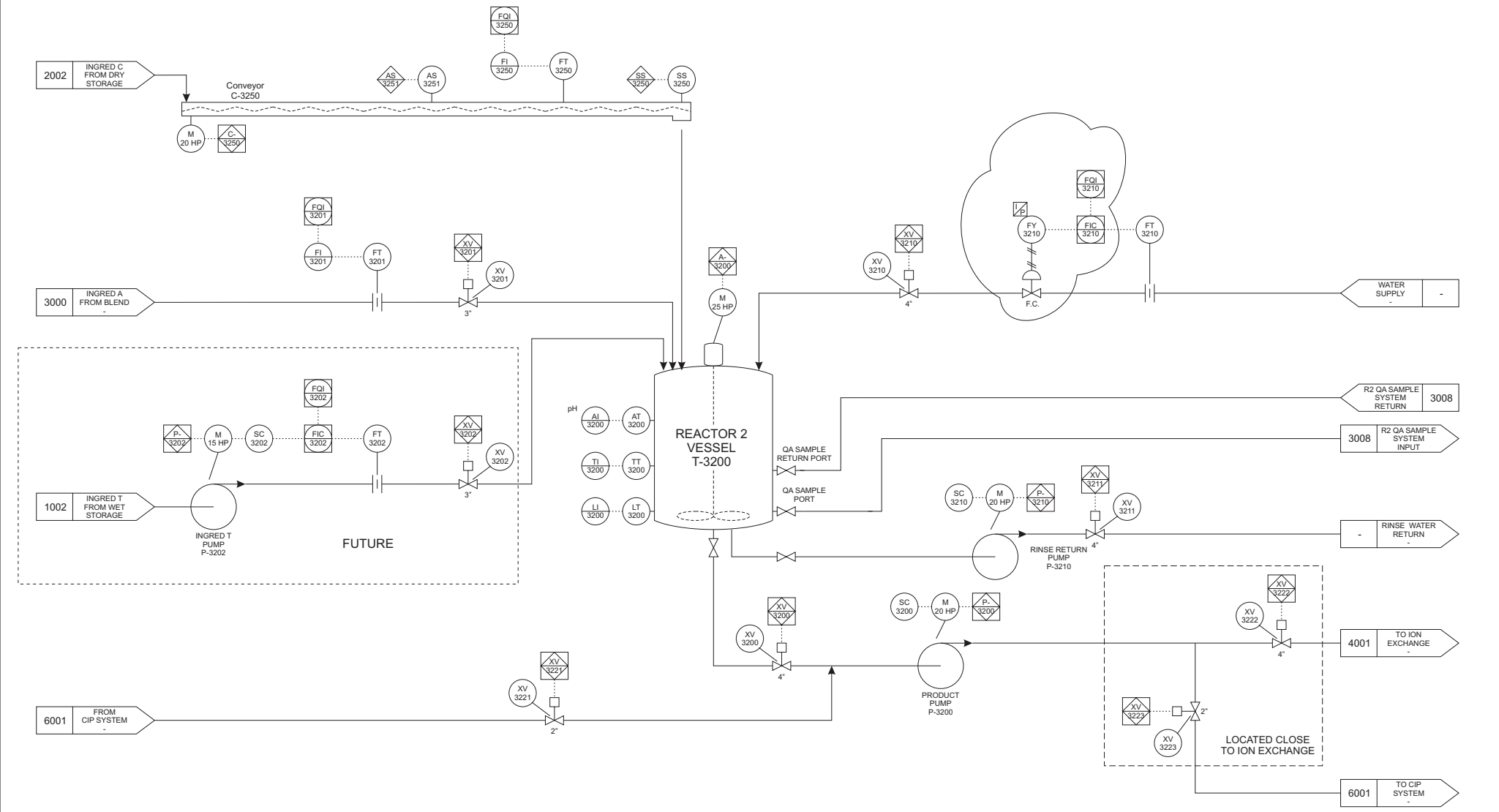
PROJ. NO. -

A.F.E. NO. -

DRAWING NO.

E-002-PD-3001-3

DRAWING NO.
E-002-PD-3002-5



3002

SCALE - NONE	DATE	REV NO.	DESCRIPTION	DATE	BY	CHKD.	APRD.	REV NO.	DESCRIPTION	DATE	BY	CHKD.	APRD.
DRAWN BY: KTE	9-21-04	1	ADD QA SAMPLE VALVES	10-05-04	KTE	CRC	JKS	1	ADD FIC3210	9-07-13	KTE	CRC	JKS
CHECKED: CRC	9-24-04	2	REMOVE P-3201 AND FLOW LOOPS	10-18-04	KTE	CRC	JKS	2		-	-	-	-
APPROVED: JKS	9-28-04	3	ADD INGRED T	9-29-05	KTE	CRC	JKS	3		-	-	-	-
APPROVED: JPS	10-01-04	4	CORRECT IN STREAM SHEET NUMBERS	9-05-07	KTE	CRC	JKS	4		-	-	-	-

K Process
ABC Products

DVP Engineering

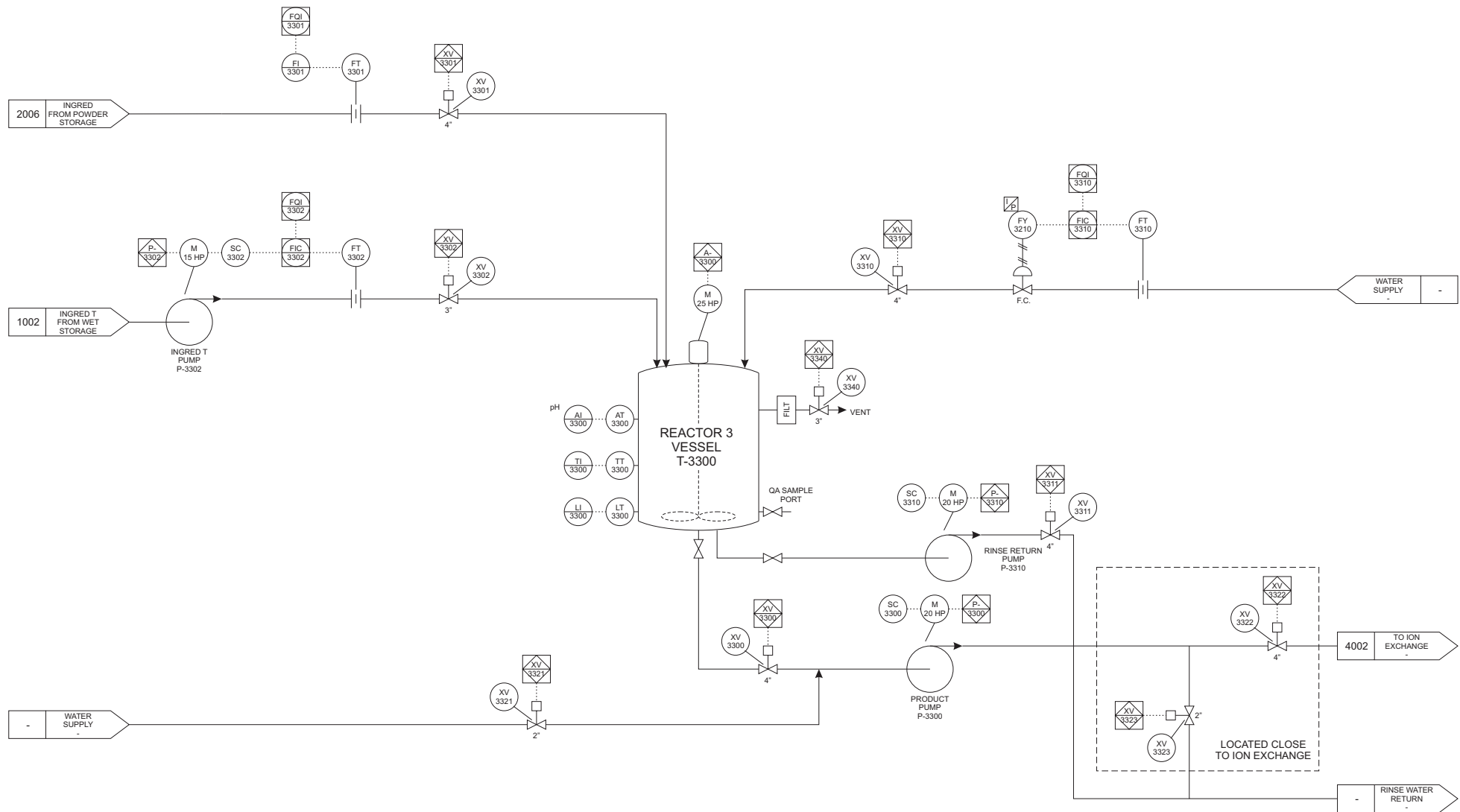
AS BUILT
FOR CONSTRUCTION
FOR BIDDING ONLY
REFERENCE ONLY

Anytown, MO XXX PRELIMINARY

REACTOR 2
3002
P & ID

CAD REF. NO. 002PD3002
PROJ. NO. -
A F E NO. -
DRAWING NO.
E-002-PD-3002-5

DRAWING NO.
E-002-PD-3003-0



3003

SCALE - NONE	DATE	REV. NO.	DESCRIPTION	DATE	BY	CHKD.	APRD.	REV. NO.	DESCRIPTION	DATE	BY	CHKD.	APRD.
DRAWN BY: KTE	8-24-14	1		-	-	-	-	1		-	-	-	-
CHECKED: CRC	8-24-14	2		-	-	-	-	2		-	-	-	-
APPROVED: JKS	8-26-14	3		-	-	-	-	3		-	-	-	-
APPROVED: JPS	9-02-14	4		-	-	-	-	4		-	-	-	-

K Process
ABC Products

DVP Engineering

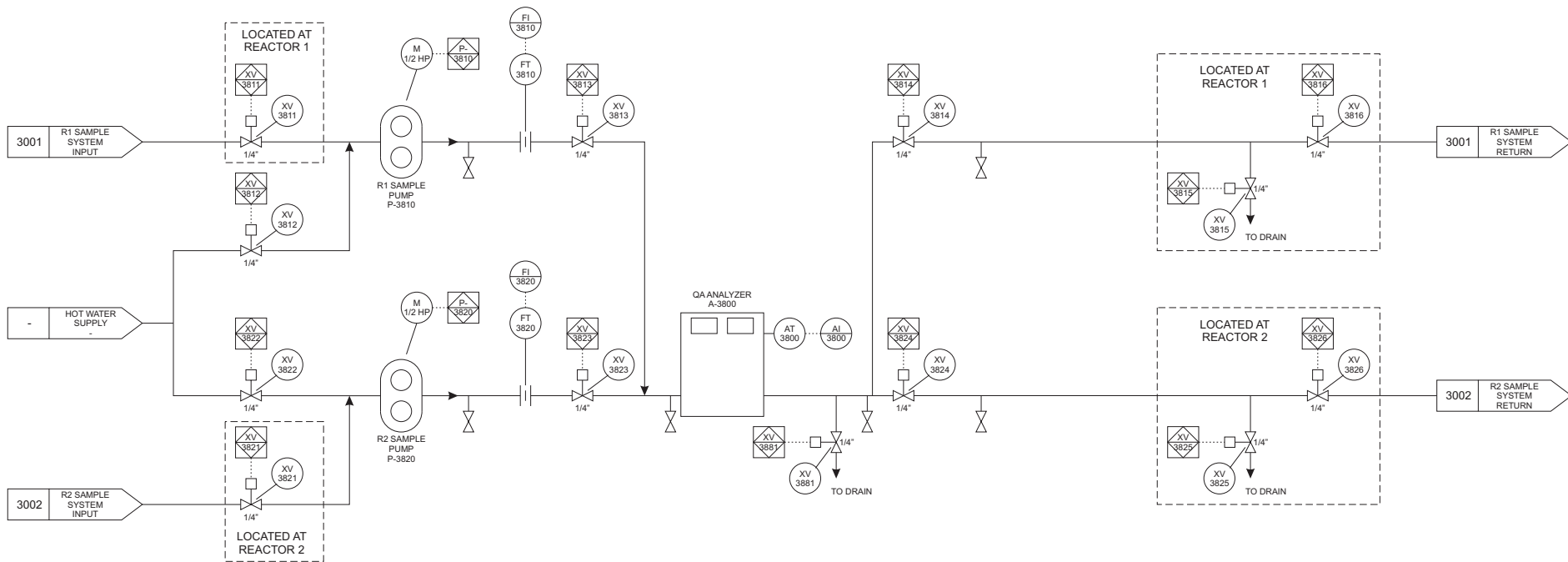
Anytown, MO

-	AS BUILT
-	FOR CONSTRUCTION
-	FOR BIDDING ONLY
-	REFERENCE ONLY
XXX	PRELIMINARY

REACTOR 3
3003
P & ID

CAD REF. NO. 002PD3003
PROJ. NO. -
A.F.E. NO. -
DRAWING NO. E-002-PD-3003-0

DRAWING NO.
E-002-PD-3008-1



3008

SCALE - NONE	DATE	REV NO.	DESCRIPTION	DATE	BY	CHKD.	APRD.	REV NO.	DESCRIPTION	DATE	BY	CHKD.	APRD.
		Δ	CORRECT R2 STREAM SHEET NUMBERS	9-05-07	KTE	CRC	JKS	Δ			-	-	-
CHECKED: CRC	10-06-04	Δ		-	-	-	-	Δ			-	-	-
APPROVED: JKS	10-07-04	Δ		-	-	-	-	Δ			-	-	-
APPROVED: JPS	10-07-04	Δ		-	-	-	-	Δ			-	-	-

K Process
ABC Products

DVP Engineering

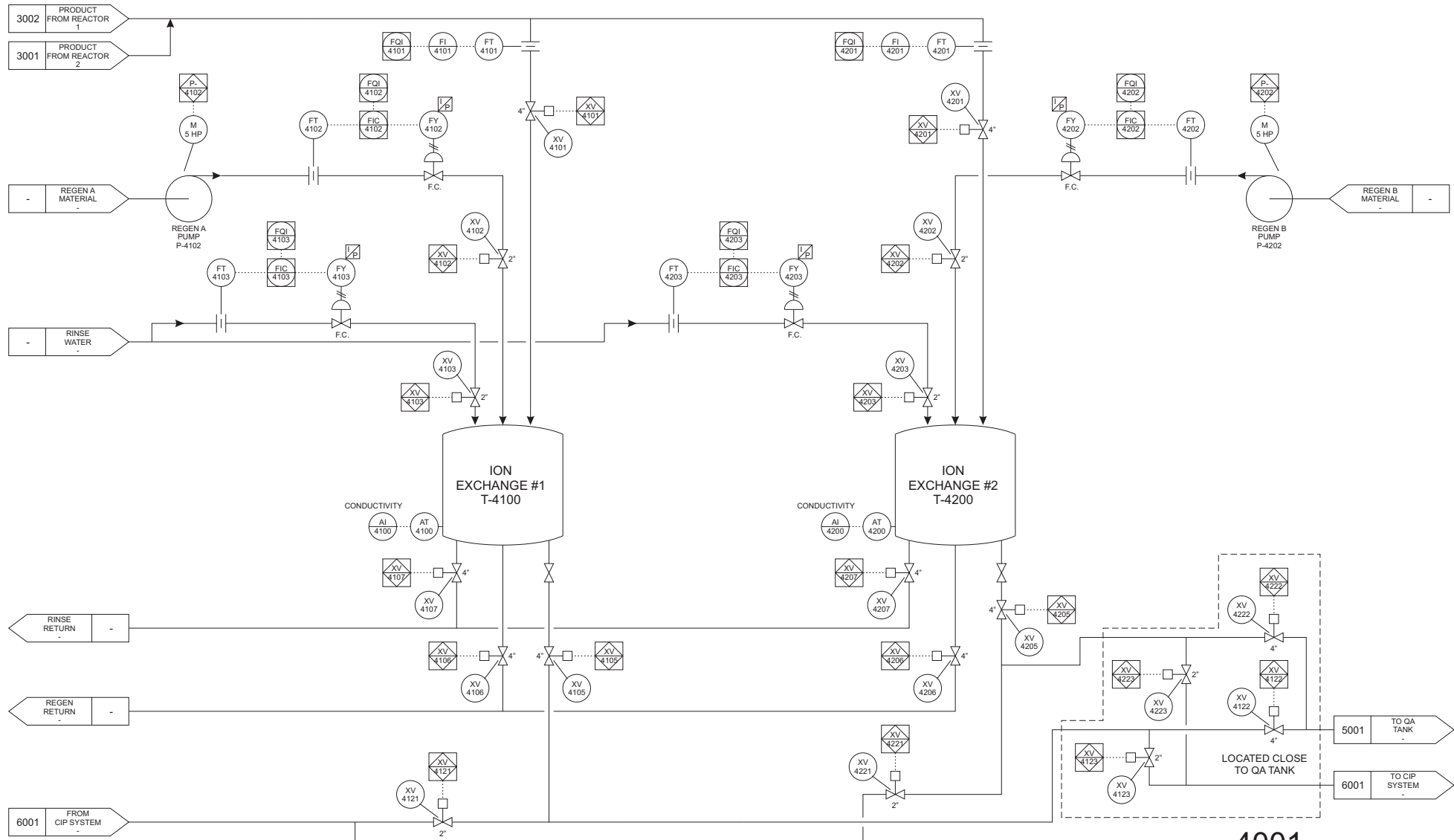
Anytown, MO

-	AS BUILT
-	FOR CONSTRUCTION
-	FOR BIDDING ONLY
-	REFERENCE ONLY
XXX	PRELIMINARY

QA SAMPLE
3008
P & ID

CAD REF. NO. 002PD3008
PROJ. NO. -
A. F. E. NO. -
DRAWING NO. E-002-PD-3008-1

DRAWING NO.
E-002-PD-4001-3

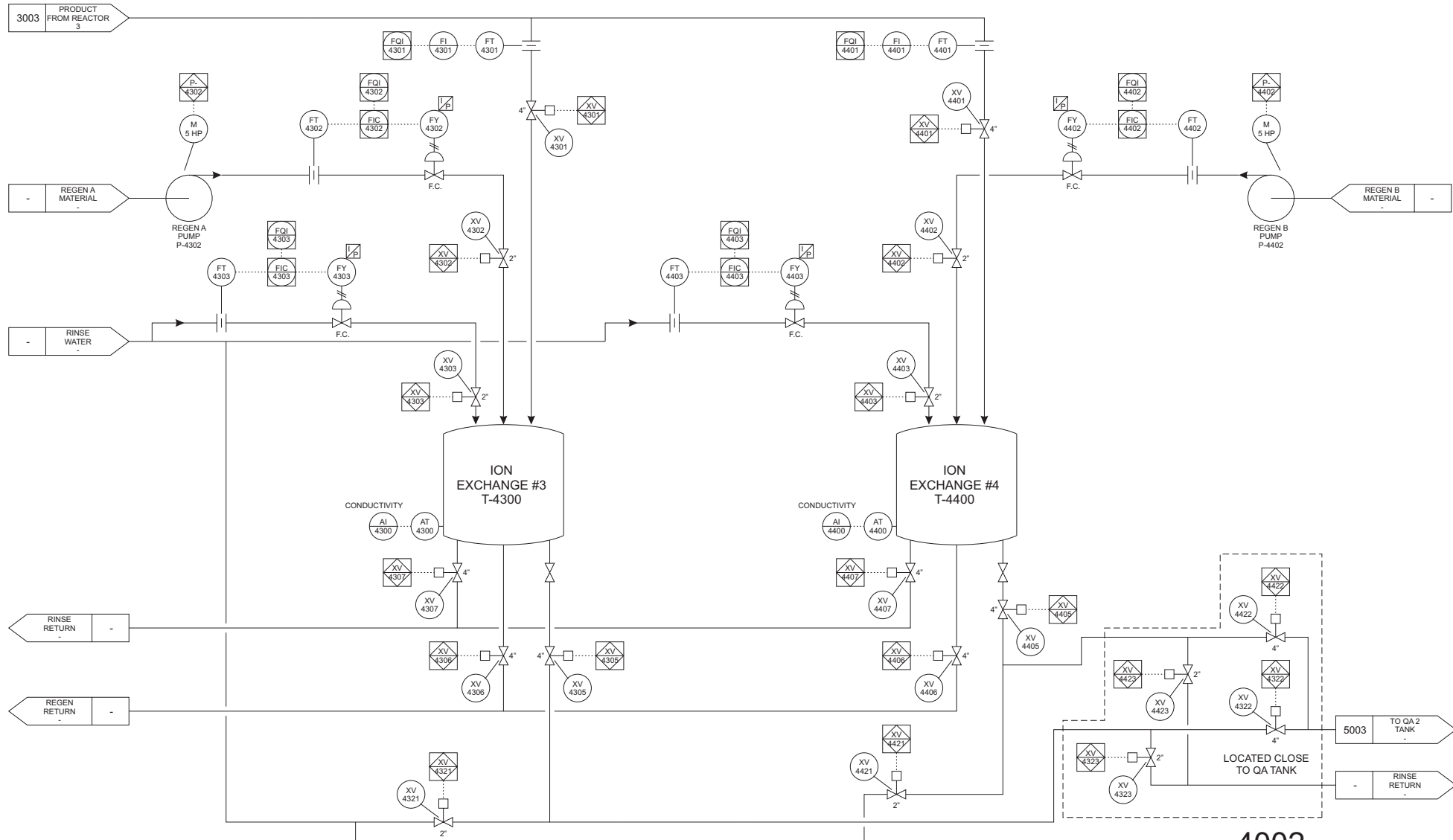


4001

SCALE - NONE	DATE	REV. NO.	DESCRIPTION	DATE	BY	CHKD.	APRD.	REV. NO.	DESCRIPTION	DATE	BY	CHKD.	APRD.
DRAWN BY: KTE	9-22-04	1	Add Ion Exchange #2	9-03-07	KTE	-	-	1		-	-	-	-
CHECKED: CRC	9-24-04	2	Correct Regen B material input	9-05-07	KTE	-	-	2		-	-	-	-
APPROVED: JKS	9-28-04	3	Correct tags for product flow indicators	12-23-08	KTE	-	-	3		-	-	-	-
APPROVED: JPS	10-01-04	4	-	-	-	-	-	4		-	-	-	-

K Process ABC Products DVP Engineering	Anytown, MO XXX	-	AS BUILT	ION EXCHANGE 1 & 2 4001 P & ID	CAD REF. NO. 002PD4001
		-	FOR CONSTRUCTION		PROJ. NO. -
		-	FOR BIDDING ONLY		A. F. E. NO. -
		-	REFERENCE ONLY		DRAWING NO. E-002-PD-4001-3

DRAWING NO.
E-002-PD-4002-0

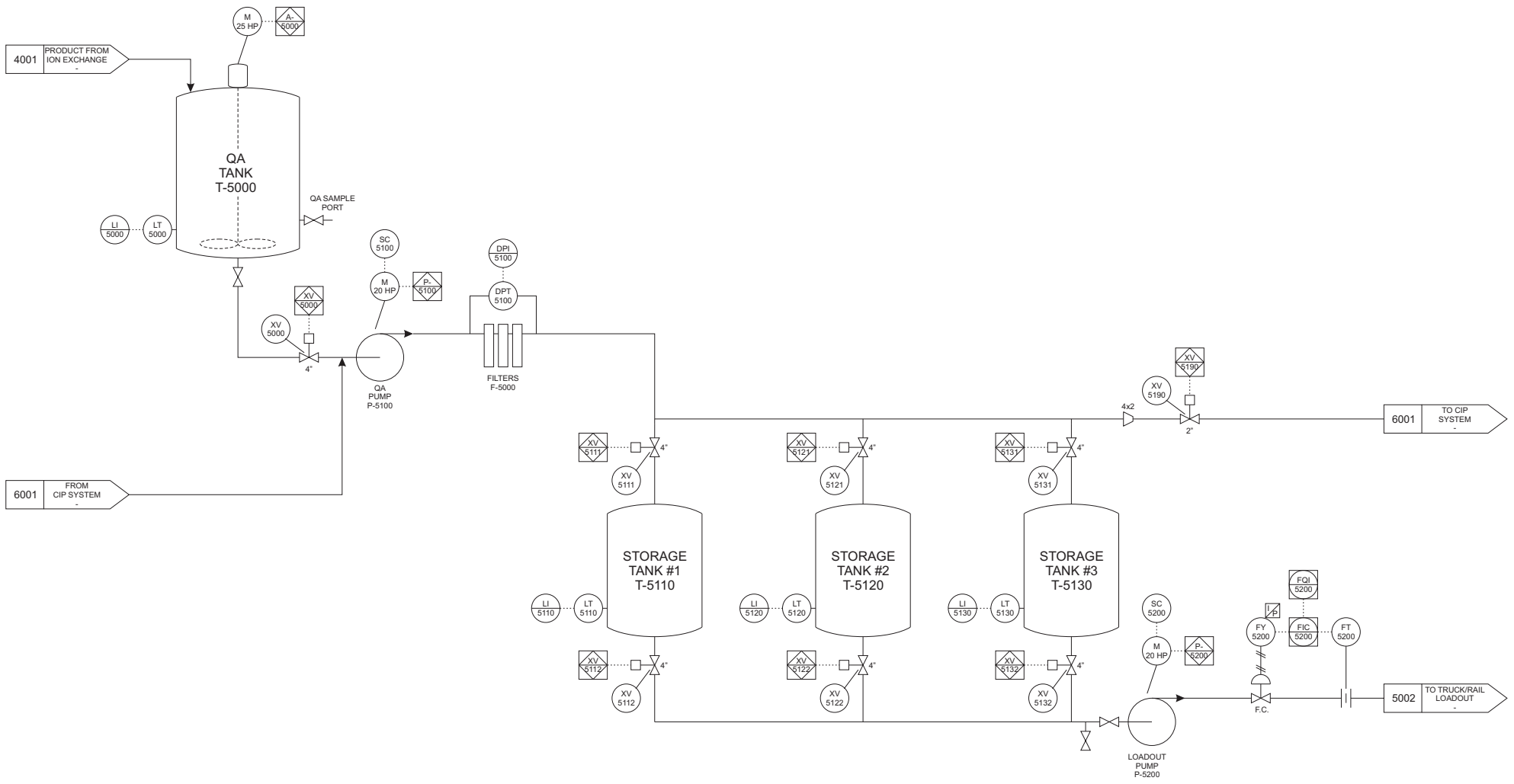


4002

SCALE - NONE	DATE	REV. NO.	DESCRIPTION	DATE	BY	CHKD.	APRD.	REV. NO.	DESCRIPTION	DATE	BY	CHKD.	APRD.
	8-25-14	1		-	-	-	-	1		-	-	-	-
	8-25-14	2		-	-	-	-	2		-	-	-	-
	8-26-14	3		-	-	-	-	3		-	-	-	-
	9-02-14	4		-	-	-	-	4		-	-	-	-

K Process ABC Products	-	AS BUILT	ION EXCHANGE 3 & 4 4002 P & ID	CAD REF. NO.	002PD4002
	-	FOR CONSTRUCTION		PROJ. NO.	-
	-	FOR BIDDING ONLY		A. F. E. NO.	-
	-	REFERENCE ONLY		DRAWING NO.	
DVP Engineering	Anytown, MO	XXX	PRELIMINARY	E-002-PD-4002-0	

DRAWING NO.
E-002-PD-5001-2

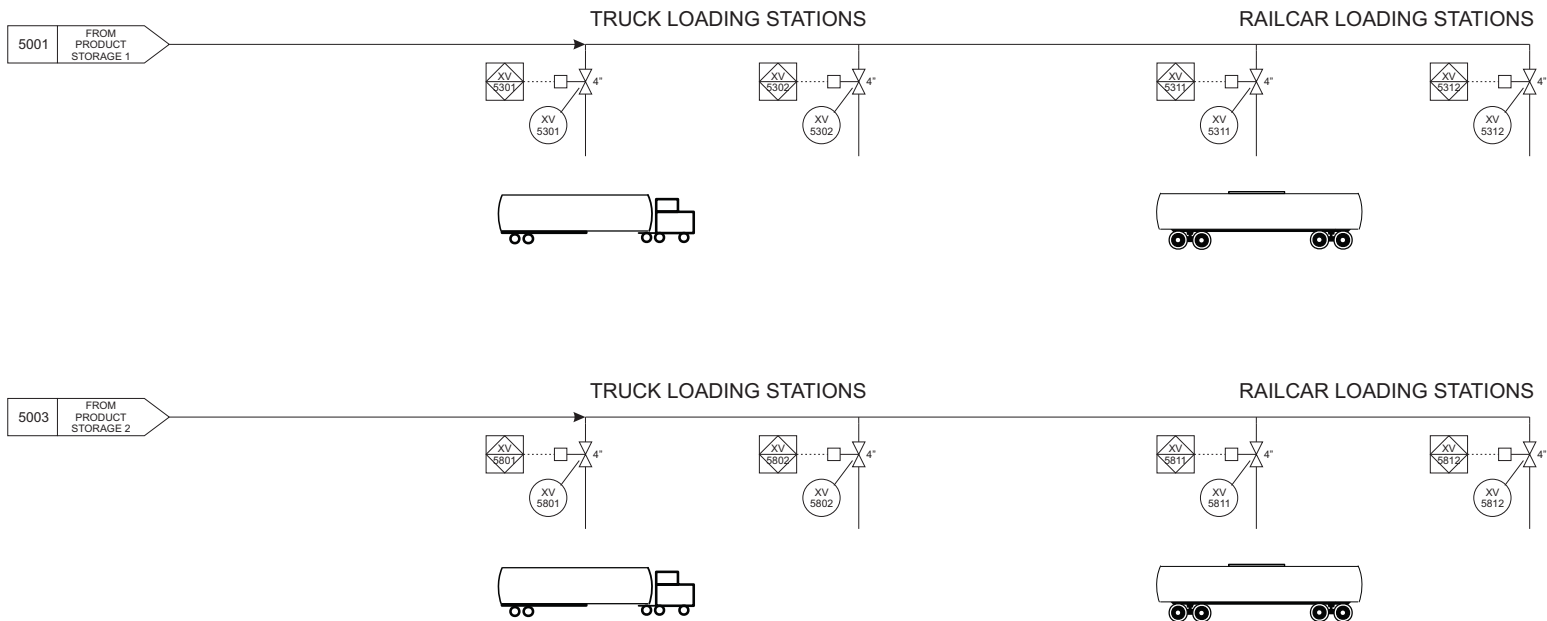


5001

SCALE - NONE	DATE	REV NO.	DESCRIPTION	DATE	BY	CHKD.	APRD.	REV NO.	DESCRIPTION	DATE	BY	CHKD.	APRD.
DRAWN BY: KTE	9-22-04	1	3" PIPES CHANGED TO 4"	10-04-04	KTE	CRC	JKS	1		-	-	-	-
CHECKED: CRC	9-24-04	2	CHANGED TITLE	9-03-14	KTE	CRC	JKS	2		-	-	-	-
APPROVED: JKS	9-28-04	3		-	-	-	-	3		-	-	-	-
APPROVED: JPS	10-01-04	4		-	-	-	-	4		-	-	-	-

K Process ABC Products	-	AS BUILT
	-	FOR CONSTRUCTION
	-	FOR BIDDING ONLY
	-	REFERENCE ONLY
DVP Engineering	Anytown, MO	XXX PRELIMINARY

PRODUCT STORAGE 1		CAD REF. NO. 002PD5001
5001		PROJ. NO. -
P & ID		A. F. E. NO. -
		DRAWING NO.
		E-002-PD-5001-2

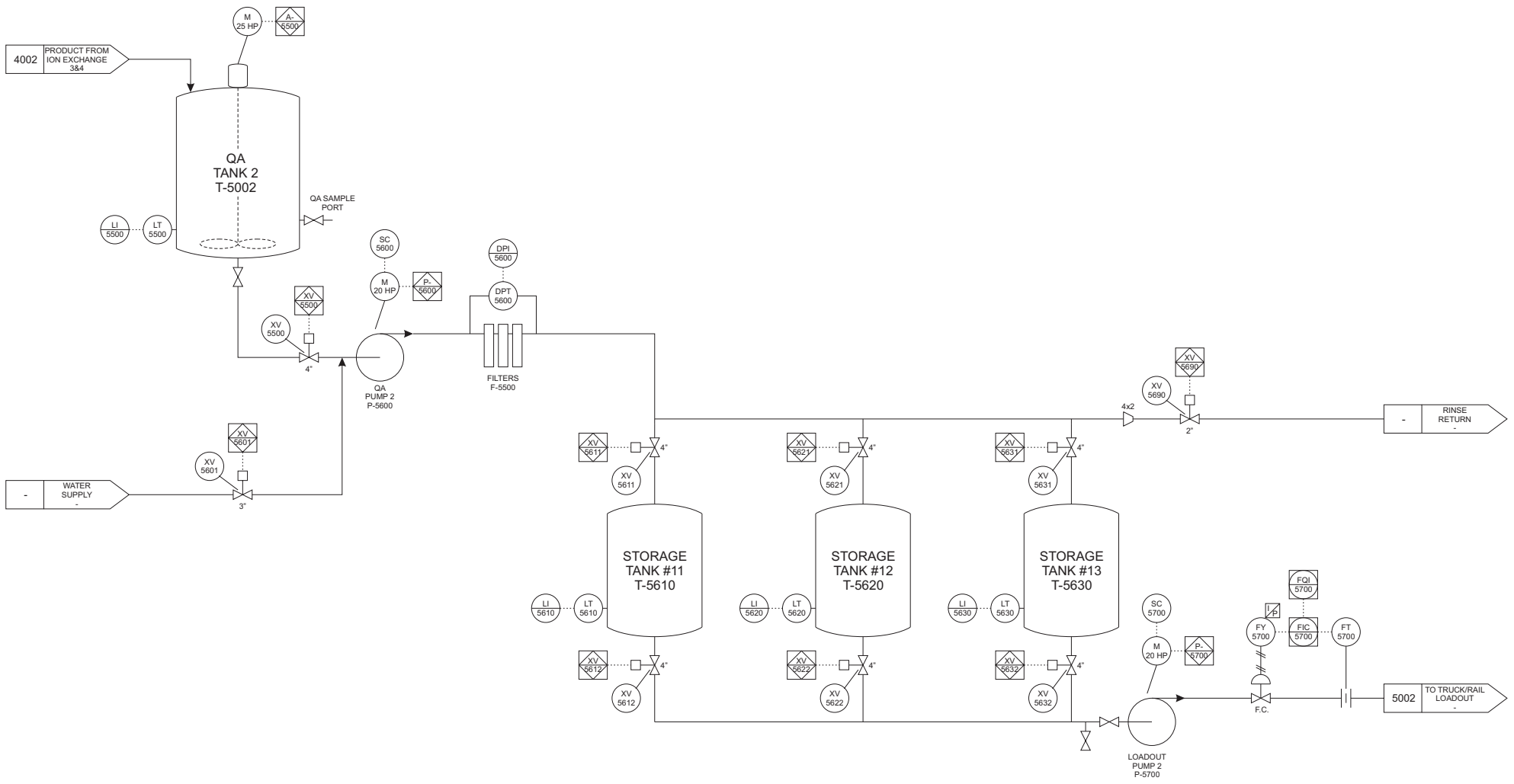


5002

SCALE - NONE	DATE	REV. NO.	DESCRIPTION	DATE	BY	CHKD.	APRD.	REV. NO.	DESCRIPTION	DATE	BY	CHKD.	APRD.
DRAWN BY: KTE	9-22-04	Δ	3" PIPES CHANGED TO 4"	10-04-04	KTE	CRC	JKS	Δ	-	-	-	-	-
CHECKED: CRC	9-24-04	Δ	ADDED LOADOUT FROM PROD STOR 2	9-03-14	KTE	CRC	JKS	Δ	-	-	-	-	-
APPROVED: JKS	9-28-04	Δ	-	-	-	-	-	Δ	-	-	-	-	-
APPROVED: JPS	10-01-04	Δ	-	-	-	-	-	Δ	-	-	-	-	-

K Process ABC Products DVP Engineering	Anytown, MO	XXX	AS BUILT	TRUCK/RAIL LOADOUT 5002 P & ID	CAD REF. NO. 002PD5002
		XXX	FOR CONSTRUCTION		PROJ. NO. -
		XXX	FOR BIDDING ONLY		A. F. E. NO. -
		XXX	REFERENCE ONLY		DRAWING NO. E-002-PD-5002-2

DRAWING NO.
E-002-PD-5003-0



5003

SCALE - NONE	DATE	REV. NO.	DESCRIPTION	DATE	BY	CHKD.	APRD.	REV. NO.	DESCRIPTION	DATE	BY	CHKD.	APRD.
DRAWN BY: KTE	8-25-14	1		-	-	-	-	1		-	-	-	-
CHECKED: CRC	8-25-14	2		-	-	-	-	2		-	-	-	-
APPROVED: JKS	8-26-14	3		-	-	-	-	3		-	-	-	-
APPROVED: JPS	9-02-14	4		-	-	-	-	4		-	-	-	-

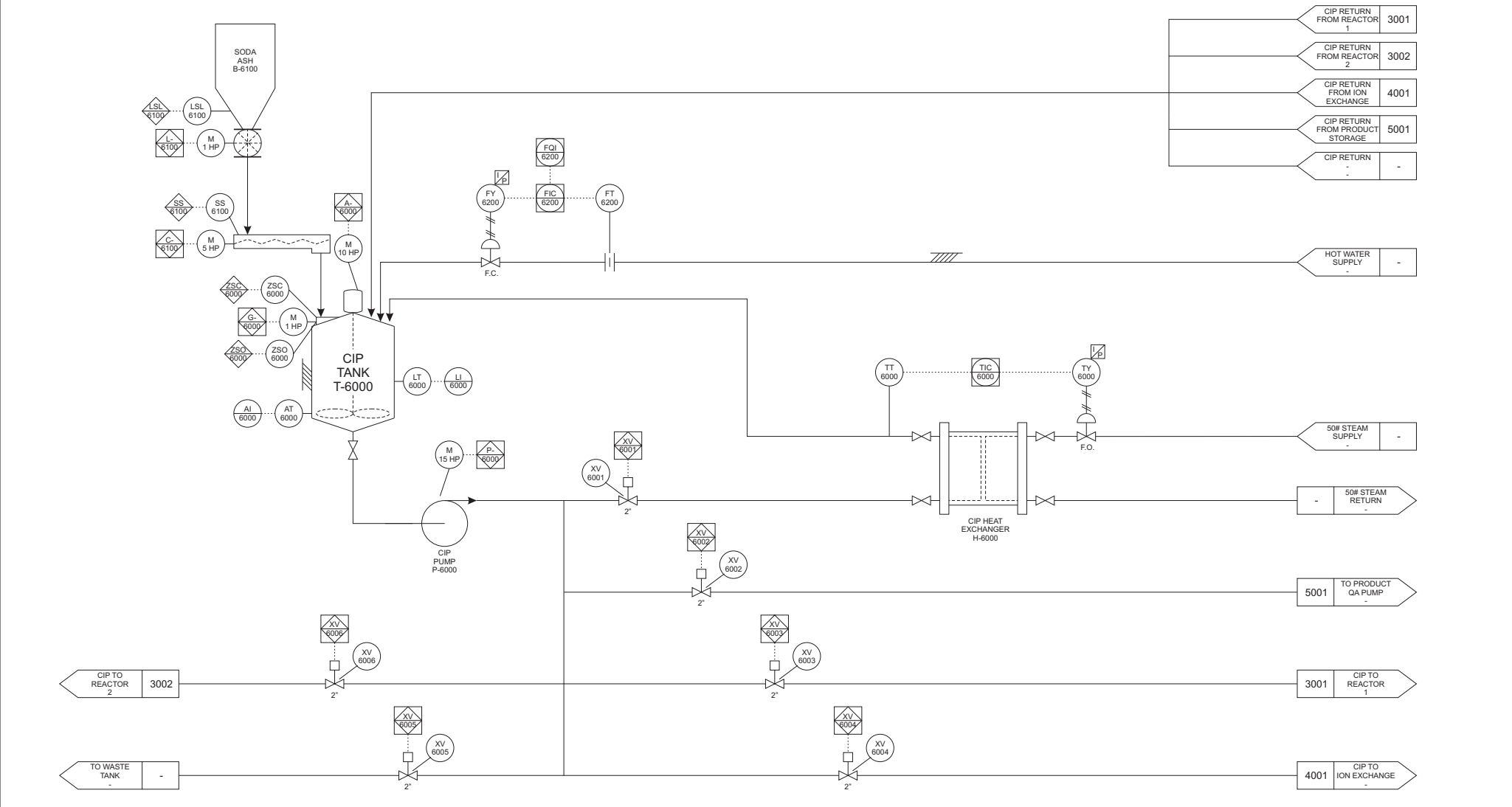
K Process
ABC Products

DVP Engineering Anytown, MO XXX

PRODUCT STORAGE 2
5003
P & ID

CAD REF. NO. 002PD5003
PROJ. NO. -
A. F. E. NO. -
DRAWING NO. E-002-PD-5003-0

DRAWING NO.
E-002-PD-6001-1



6001

SCALE - NONE	DATE	REV. NO.	DESCRIPTION	DATE	BY	CHKD.	APRD.	REV. NO.	DESCRIPTION	DATE	BY	CHKD.	APRD.
DRAWN BY: KTE	9-21-04	1	CHANGE HOT WATER FLOW TAGS	10-04-04	KTE	CRC	JKS	1					
CHECKED: CRC	9-24-04	2						2					
APPROVED: JKS	9-28-04	3						3					
APPROVED: JPS	10-01-04	4						4					

K Process ABC Products	-	AS BUILT	CIP SYSTEMS 6001 P & ID	CAD REF. NO. 002PD6001
	-	FOR CONSTRUCTION		PROJ. NO. -
	-	FOR BIDDING ONLY		A. F. E. NO. -
	-	REFERENCE ONLY		
DVP Engineering	Anytown, MO	XXX	PRELIMINARY	DRAWING NO. E-002-PD-6001-1